



# Born Too Early and Too Small: Higher Order Cognitive Function and Brain at Risk at Ages 8–16

Marta Córcoles-Parada<sup>1</sup>, Rocio Giménez-Mateo<sup>1</sup>, Victor Serrano-del-Pueblo<sup>1</sup>, Leidy López<sup>1,2</sup>, Elena Pérez-Hernández<sup>3</sup>, Francisco Mansilla<sup>4</sup>, Andres Martínez<sup>5</sup>, Ignacio Onsurbe<sup>6</sup>, Paloma San Roman<sup>7</sup>, Mar Ubero-Martinez<sup>1,8</sup>, Jonathan D. Clayden<sup>9</sup>, Chris A. Clark<sup>9</sup> and Mónica Muñoz-López<sup>1,10\*</sup>†

<sup>1</sup> Human Neuroanatomy Laboratory, School of Medicine and Regional Centre for Biomedical Research, University of Castilla-La Mancha, Albacete, Spain, <sup>2</sup> Department of Psychology, University of Area Andina, Bogotá, Colombia, <sup>3</sup> Developmental and Educational Psychology, Autonomous University, Madrid, Spain, <sup>4</sup> Radiology Service, Sta. Cristina Clinic and University Hospital of Albacete, Albacete, Spain, <sup>5</sup> Neonatology Service, University Hospital of Albacete, Albacete, Spain, <sup>6</sup> Paediatric Neurology Service, University Hospital of Albacete, Albacete, Spain, <sup>7</sup> Child Psychiatry Service, University Hospital of Albacete, Albacete, Spain, <sup>8</sup> Department of Anatomy, Catholic University of Murcia, Murcia, Spain, <sup>9</sup> Developmental Imaging and Biophysics Section, Institute of Child Health, University College London, London, United Kingdom, <sup>10</sup> Centre for Clinical Brain Sciences, University of Edinburgh, Edinburgh, United Kingdom

## OPEN ACCESS

### Edited by:

Federica Scarpina,  
Italian Auxological Institute (IRCCS),  
Italy

### Reviewed by:

Dustin Scheinost,  
Yale University, United States  
Serena Giunta,  
University of Palermo, Italy

### \*Correspondence:

Mónica Muñoz-López  
monica.munozlopez@uclm.es

### †ORCID:

Mónica Muñoz-López  
orcid.org/0000-0002-5530-2394

### Specialty section:

This article was submitted to  
Psychology for Clinical Settings,  
a section of the journal  
Frontiers in Psychology

**Received:** 05 March 2019

**Accepted:** 07 August 2019

**Published:** 06 September 2019

### Citation:

Córcoles-Parada M,  
Giménez-Mateo R,  
Serrano-del-Pueblo V, López L,  
Pérez-Hernández E, Mansilla F,  
Martínez A, Onsurbe I, San Roman P,  
Ubero-Martinez M, Clayden JD,  
Clark CA and Muñoz-López M (2019)  
Born Too Early and Too Small: Higher  
Order Cognitive Function and Brain  
at Risk at Ages 8–16.  
Front. Psychol. 10:1942.  
doi: 10.3389/fpsyg.2019.01942

Prematurity presents a risk for higher order cognitive functions. Some of these deficits manifest later in development, when these functions are expected to mature. However, the causes and consequences of prematurity are still unclear. We conducted a longitudinal study to first identify clinical predictors of ultrasound brain abnormalities in 196 children born very preterm (VP; gestational age  $\leq 32$  weeks) and with very low birth weight (VLBW; birth weight  $\leq 1500$  g). At ages 8–16, the subset of VP-VLBW children without neurological findings (124) were invited for a neuropsychological assessment and an MRI scan (41 accepted). Of these, 29 met a rigorous criterion for MRI quality and an age, and gender-matched control group ( $n = 14$ ) was included in this study. The key findings in the VP-VLBW neonates were: (a) 37% of the VP-VLBW neonates had ultrasound brain abnormalities; (b) gestational age and birth weight collectively with hospital course (i.e., days in hospital, neonatal intensive care, mechanical ventilation and with oxygen therapy, surgeries, and retinopathy of prematurity) predicted ultrasound brain abnormalities. At ages 8–16, VP-VLBW children showed: a) lower intelligent quotient (IQ) and executive function; b) decreased gray and white matter (WM) integrity; (c) IQ correlated negatively with cortical thickness in higher order processing cortical areas. In conclusion, our data indicate that facets of executive function and IQ are the most affected in VP-VLBW children likely due to altered higher order cortical areas and underlying WM.

**Keywords:** preterm, perinatal clinical variables, cognition, MRI, DTI, cognitive function, fornix, memory

**Abbreviations:** AD, axial diffusivity; BASC, behavior assessment system for children; BW, birth weight; cc, *Corpus callosum*; CI, confidence interval; CPT, Conners' continuous performance test; DTI, diffusion tensor imaging; FA, fractional anisotropy; Fi, fimbria; Fx, fornix; GA, gestational age; GM, gray matter; ICV, intracranial volume; IQ, intelligence quotient; MD, mean diffusivity; mPFC, medial prefrontal cortex; MRI, magnetic resonance imaging; NEC, necrotizing enterocolitis; NICU, neonatal intensive care unit; PCA, principal component analysis; RD, radial diffusivity; ROP, retinopathy of prematurity; SD, standard deviation; TBSS, tract-based spatial statistics; TOMAL, test of memory and learning; VP-VLBW, very preterm-very low birth weight; WISC, Wechsler intelligence scale for children; WM, white matter.

## INTRODUCTION

Despite increased survival and decreased morbidity of children born very premature (VP) with very low birth weight (VLBW), the long-term outcome of these children is variable. Recognition of the risks and consequences is a concern through the world (World Health Organization, 2018). This concern is extensive from children born VP-VLBW who develop with brain and neurological deficits to those, the great majority nowadays, that instead grow with higher order cognitive difficulties. The high incidence of these subtler cognitive difficulties often apparent later in development, i.e., at school age and/or teenager hood and has been indirectly evidenced in large cohort studies – EPIPAGE (Larroque et al., 2008) and EPICURE (Moore et al., 2012) – revealing that about one third of children born preterm seek specialist assistance later in life, especially in psychiatry and educational services. Common reported concerns are poorer intelligence quotient (IQ), working memory, attention, and executive function (Nosarti et al., 2008; Geldof et al., 2013; Kalpakidou et al., 2014; Eryigit Madzwamuse et al., 2015; Murray et al., 2016; Franz et al., 2018; Loe et al., 2018; Aanes et al., 2019). Such deficits, even if subtle, may hinder academic achievement as well as integration in society. It remains unclear, however, what specific aspects of these functions are associated with changes in specific brain areas or networks.

The first step has been to find out what modifiable risk factors impact cognitive development of children born VP-VLBW; with the consequent optimization of early interventions (Pierrat et al., 2017). The second key step is to characterize the cognitive and brain profile of children born VP-VLBW. One way of doing this is by measuring cognitive function in association with structural and functional magnetic resonance imaging (MRI). Structural brain morphometric data of VP-VLBW children indicate that, at school age, preterm children show changes in cortical gray and white matter (WM) volumes, as well as in surface area in sensorimotor cortex and higher order processing areas of the cerebral cortex such as the prefrontal, posterior superior temporal and parietal and occipital cortices (Skranes et al., 2013; Akazawa et al., 2015; Sølsnes et al., 2015; Zhang et al., 2015). Not only the cerebral cortex seems to be affected in prematurity but also the thalamus, cerebellar WM (Martinussen et al., 2009; Brossard-Racine et al., 2017), the *globus pallidus*, and the *corpus callosum* (cc) (Malavolti et al., 2017; Lean et al., 2019). There is also an enlargement of the lateral ventricles in adolescence and early adulthood (Bjuland et al., 2014). This data support the notion that, in addition to sensorimotor difficulties, higher order cognitive function is at risk in very preterm children. Brain connectivity data from diffusion tensor imaging (DTI) (Anjari et al., 2007; Rose et al., 2008; Duerden et al., 2019), tractography (Murray et al., 2016), and more recently, connectome analysis (Thompson et al., 2016) points to altered WM connectivity in preterm children compared with infants born at term. There are also recent studies trying to assess DTI parameters in fetuses, which can be useful in the future to study abnormalities *in utero* as well as the impact the exposure to the ex utero environment on brain development may have (Mitter et al., 2015; Lockwood Estrin et al., 2019). However, despite of the flourishing studies

on human brain imaging, clinical data, or animal models, the problem of risks, mechanisms, and neurocognitive consequences of being born too early still escape our hands.

To start addressing some of the causes and consequences of neurocognitive impairment in preterm children, we designed a two phases study. Phase I aimed to identify causes of brain damage in VP-VLBW neonates by looking at the association of perinatal risk factors and ultrasound brain abnormalities detected in new-born VP-VLBW babies (i.e., gestational age,  $GA \leq 32$  weeks, and birth weight,  $BW \leq 1500$  g). Our hypothesis is that some specific perinatal factors explain, at least in part, the variability in neonatal brain abnormalities in VP-VLBW neonates. Phase II was designed to determine neurocognitive outcome of high order cognitive functions in a subgroup of neurologically healthy children from the VP-VLBW cohort at school age (8–16 years old). With this aim, we used restrictive selection criteria to include only those children that were VP-VLBW and showed no brain abnormalities in MRI and no neurological signs. Our hypothesis is that higher order cognitive functions such as executive function and memory are affected in association with altered higher order processing areas of the cerebral cortex and underlying WM in the VP-VLBW group.

## MATERIALS AND METHODS

### Participants

#### Neonates

For Phase I, preterm babies from total live births from 01/01/95 to 31/12/04 born/referred at born to the Albacete University Hospital were included. Inclusion criteria were  $GA \leq 32$  weeks and  $BW \leq 1500$ g. Chromosomal syndromes, often associated with cardiac, respiratory, and/or brain abnormalities, could be confounding factors in this study, and therefore, children diagnosed with such syndromes were excluded.

#### School Age (8–16 Years Old)

In Phase II, children from the previous group who had no neurological or MRI findings were invited to take part at 8–16 years of age. An age and gender matched control group was recruited in schools in the same demographic area.

### Ethics Statement

This study was conducted according with the World Medical Association ethical principles for research (Rickham, 1964) and with the local ethical University of Castilla-La Mancha Medical School and the Albacete University Hospital clinical research committee (Acta 02/12). Written and signed informed consent was obtained for all the participants and their parents.

### Perinatal Variables and Brain Ultrasonography at Birth

To identify risk factors for abnormal brain ultrasonography (Phase I of the study), we examined medical charts of all the VP-VLBW children. **Table 1** defines the neonatal variables included in this study. Brain ultrasonography was performed with a General Electric LOGIA 400 CL ProSeries system at birth

**TABLE 1** | Neonatal clinical variables included in this study.

Variables	Definition
<b>Mother/pregnancy</b>	
Toxic habits	Smoking
Reproductive/Gynecological	Fertilization treatments, previous preterm births
Medical condition	Diabetes mellitus, hypertension
<b>Intrapartum</b>	
Amniorrhexis	Prelabor rupture of membranes.
Pre-eclampsia	Hypertension, proteinuria, and edema after the 20th week of gestation
Mode of delivery	Normal vaginal, cesarean, emergency cesarean, elective cesarean
Fetal presentation	Unknown, cephalic, podalic, bottom, transverse
<b>Neonatal</b>	
Gestational age (weeks)	Positive ultrasonography, last menstrual period, clinical assessments
Apgar scores at 1' and 5'	Scores from 1 to 2 of Appearance, Pulse, Grimace, Activity, Respiration
<b>Respiratory</b>	
Respiratory distress	Bronchopulmonary dysplasia, oxygen dependency, apnea, hyaline membrane disease
Bradycardia	Heart rate <100 l pm
Pulmonary hemorrhage	Positive bronchial aspiration for blood and respiratory deterioration
Pulmonary hypertension	Superior right limb and left inferior limb gradient in oxygen saturation >5% + hypoxemic trend
Pneumothorax	Thorax x-ray confirmation of air in pleural space
Asphyxia	Metabolic acidosis in umbilical cord pH + neonatal encephalopathy + background of alterations in cardiotocographic fetal exploration
<b>Cardiac hemodynamic</b>	
Systolic murmur	Positive auscultation for heart murmur
Patent <i>ductus arteriosus</i>	Sistolc murmur + tensional gradient + bounding pulses and respiratory deterioration. Arterial flow between aorta and pulmonary artery shown via bidimensional echocardiography
Hypertension	Systolic pressure higher than percentile 90 Hg for gestational age
Hypotension	Mean arterial blood pressure lower than the gestational age during the first 3 days
Jaundice of prematurity	Increased bilirubinemia over birth weight expressed in g/100
Anemia	Level of hemoglobin in blood count <12 g/dl
Thrombocytopenia	Level of platelets <100.000/mm <sup>3</sup>
Coagulopathy	Altered of activated partial thromboplastine time or prothrombine time
<b>Ultrasound brain abnormalities</b>	
Periventricular leukomalacia	Unilateral/bilateral hypo-echogenicity areas in brain parenquima adjacent to lateral boundaries of the ventricular system.
IV hemorrhage	Unilateral/bilateral abnormally extensive hypo-echogenicity areas in the ventricular system
Hydrocephalus	Symmetric bilateral increased size of the ventricular system
Microcephaly	<Percentile 10
<b>Neurological</b>	
Cerebral palsy	Chronic disability of central nervous system origin characterized by aberrant control of movement and posture, appearing early in life
Severe mental retardation	Severely retarded individuals have IQ scores of <40
Seizures/Epilepsy	Presence of convulsive movements with or without electroencephalography correlation
Tetraplegia, diplegia	Paralysis affecting the four limbs, paralysis affecting symmetrical parts of the body
<b>Inflammatory</b>	
Sepsis	Clinically, symptoms and alterations from laboratory results compatibles with infection with negative cultures. Confirmed, symptoms of infection + blood culture or urine culture and/or positive cerebrospinal fluid
Necrotizing enterocolitis	Digestive tolerance alteration necrotizing enterocolitis type II or higher
Otitis	Otic pain + positive symptom with compatible eardrum exploration
Conjunctivitis	Presence of conjunctival pus drainage
<b>Ophthalmic</b>	
Retinopathy of prematurity	Defined according to the criteria established by the Committee for the Classification of Retinopathy of Prematurity (The International Classification of Retinopathy of Prematurity  Neonatology   JAMA Ophthalmology   The JAMA Network)
<b>Medical treatments</b>	
Red blood cell transfusion	Hemoglobin level below 10 g/dL or hematocrit falls below 25%
Oxygen therapy	Oxygen is applied up to get saturations of 90–95% in pulse oxymetry
Mechanical ventilation	Mechanically assist or replace spontaneous breathing
Surgery	Any surgery during hospitalization

and/or before the end of the first week of life. Brain ultrasound abnormalities were diagnosed by a pediatrician (AM) and a neuroradiologist (FM).

## Neuropsychological Assessment and MRI Scan

In Phase II, the 8–16 years old VP-VLBW and the control group were assessed by the pediatric neurologist and had an MRI scan before being assessed with a neuropsychological battery of tests.

The battery of standardized neuropsychological tests assessed: intelligence (Wechsler Intelligence Scale for Children, WISC-IV) (Wechsler, 2003), general memory (Test of Memory and Learning, TOMAL) (Reynolds and Bigler, 1994), spatial and everyday memory (Rivermead Behavioral Memory Test, RBMT) (Wilson et al., 1985), attentional interference (STROOP) (Golden, 1978), and verbal fluency (Children Executive Functions, ENFEN) (Portellano et al., 2009). Selective attention, impulsivity, and vigilance were tested with a computerized test (Continuous Performance Test, CPT-II) (Conners, 2000). Parents, participants and teachers filled in the questionnaire Behavioral Assessment System for Children (BASC) (Reynolds and Kamphaus, 1992). Parents also filled a socioeconomic questionnaire specifically created for this study to register annual parental income and academic degree.

## Statistics

Statistical analysis (SPSS, v.20.0) was conducted for both, neonates and the 8–16 years old group.

In Phase I, neonatal clinical data was first reduced by means of a principal component analysis (PCA) stepwise backward. Second, to identify possible associations between neonatal variables and presence of ultrasound brain abnormalities, a multivariate logistic regression analysis was calculated with maximum likelihood model estimation ( $p \leq 0.05$  and 95% confidence interval). Presence/absence of ultrasound brain abnormality was considered as dependent variable and the factors obtained in the PCA analysis were included as independent variables.  $p \leq 0.05$  was considered significant for all the analyses.

In Phase II, neuropsychological data of the 8–16 years old participants was analyzed with multivariate analysis of variance (ANOVA) tests or Mann-Witney  $U$  tests. Kolmogorov-Smirnov and Shapiro-Wilk normality tests were used. Significant differences were taken if  $p \leq 0.05$ .

## Brain Imaging

### MRI Acquisition at 8–16 Years of Age

Phase II participants' (ages 8–16) were scanned in an Optima MR 450 W General Electric 1.5T scanner with: (1) anatomical SPGR 3D, TR: 8.5 ms, TE: 3.2 ms, TI: 400 ms, thickness: 1 mm, gap: 0, isotropic matrix:  $256 \times 256 \times 256$ , nex: 1, acquisition time = 7.28 min; (2) Diffusion Tensor Imaging: 20 directions, TR: 9425 ms, TE: 103 ms, angle:  $90^\circ$ , thickness: 3, gap: 0, nex: 2, voxel size:  $3 \times 3 \times 3$ , acquisition time = 6.45 min. A clinical neuroradiologist (FM) reported no significant findings. MRI data pre-processing started by converting the DICOM

images into NIfTI format using dcm2nii tool from MRICron (Rorden and Brett, 2000).

### Brain Gray Matter Integrity

Cortical reconstruction and volumetric segmentation of gray matter (GM) was performed with Freesurfer (version 6.0.0<sup>1</sup>) (Dale et al., 1999; Fischl et al., 1999a,b, 2001, 2002, 2004a,b; Ségonne et al., 2004). Accuracy of automated segmentation was reviewed and control points were used according with Freesurfer guidelines.

Cortical surface was segmented according with the Desikan-Killiany atlas (Desikan et al., 2006). Surface area was the sum of the area of the vertices in each parcellation; cortical thickness was calculated as the closest distance from the WM/GM boundary to the pial surface at each vertex on the tessellated surface (Fischl and Dale, 2000). Volume was the product of the surface area by cortical thickness for each region. In the automatic subcortical segmentation, each voxel in the normalized brain volume was assigned to one of about 40 labels, determined by location and intensity.

Cortical thickness analysis was run by using the single-binary application included in Freesurfer QDEC 1.5. Multivariate analysis of variance (ANCOVA, SPSS) was used for surface area, cortical and subcortical GM volume with intracranial volume (ICV), gender, and age at scan as covariates.

Spatial correlations were run between cortical thickness and neuropsychological values below control levels in the VP-VLBW group. General linear model in QDEC 1.5 was used, controlling for ICV, gender, and age. SPSS v.20.0 was used for the correlations between cortical surface area and GM volume with the cortical and subcortical parcellations and neuropsychological scores. Bonferroni multiple was used for correction. Significant differences were taken if  $p \leq 0.05$ .

### Brain White Matter Integrity

#### Tract-based spatial statistics (TBSS)

The pipeline for DTI data processing was conducted with the FMRIB's Diffusion Toolbox (FDT, FSL, FMRIB Software Library, Oxford, United Kingdom). The DTI images were registered to the non-diffusion-weighted (b0) image to minimize artifacts due to eddy currents distortions, and a mask was created to exclude non-brain voxels. The skull was then removed from the image using the FSL BET tool. Fractional anisotropy (FA), mean diffusivity (MD), and  $\lambda_1$ ,  $\lambda_2$ , and  $\lambda_3$  values were calculated by using the FSL DTI-FIT to fit all the tensors.  $\lambda_1$  is considered axial diffusivity (AD).  $\lambda_2$  and  $\lambda_3$  values were averaged to obtain radial diffusivity (RD) maps.

Participants' FA maps were aligned to a  $1 \times 1 \times 1$  mm standard space by a non-linear registration and the FMRIB58 image as a target. The aligned images were used to create a mean FA map and a mean FA skeleton, with the centers of all the tracts common to the group. This FA skeleton was thresholded at  $FA > 0.2$  to include the major WM pathways and exclude most of the GM. Then, each subject's aligned FA data were projected onto this skeleton and the resulting data were

<sup>1</sup><http://surfer.nmr.mgh.harvard.edu/>

fed into it voxelwise across subjects. Multiple error correction was controlled with the randomize tool, and FSL's TFCE was used to carry out non-parametric permutation-based statistical comparisons of VP-VLBW vs. control FA, MD, AD, and RD maps (5000 permutations) with ICV, gender, and age at scan as covariates. Significance if  $p \leq 0.05$ .

Whole brain FA and RD as well as the anatomical tracts were investigated in terms of correlation analysis with neuropsychological data.

## RESULTS

### Neonates

In Phase I of the study, of the 36,001 live births at the Albacete University Hospital, approximately 8% were preterm and 1% were VP-VLBW. Of the 270 (0.7%) potentially eligible children, 207 (77%) survived. Causes of demise were: cardiac arrest (27), asphyxia (23), septic shock (10), and multiple malformation syndrome (3). Of the 207 survivors, 4 had chromosomal malformations and 7 had incomplete charts and were excluded. The final sample that forms the VP-VLBW cohort was of 196 babies. Neonatal data of all the VP-VLBW children included is summarized in **Table 2**.

### Neonatal Ultrasound Brain and Neurological Findings

Within the VPLBW new-born babies, 72 (37% of 196) had one type of ultrasound brain abnormality. Intraventricular hemorrhage was the most common (20 cases), followed by choroid plexus pathology (13), microcephalia (6), periventricular leukomalacia (5), and hydrocephalus (2). The remaining children (26) had more than one finding. Convulsions without any ultrasonography abnormality were seen in 6 cases.

Of the 72 babies with brain findings, 18 had severe neurological consequences defined by the neurological pediatrician and the neonatologist: 6 were diagnosed with one problem only (cerebral palsy, severe mental retardation, epilepsy, blindness, deafness, encephalopathy) whereas 12 presented multiple diagnoses.

### Data Reduction and Multivariate Logistic Regression

The PCA reduced the 17 neonatal variables that discriminated those children with brain ultrasound abnormalities into 6 components. These PCAs explained up to 70% of the variance. **Table 2** illustrates the PCAs extracted (PCA, row headings) together with the results from the multivariate logistic regression (column headings). The first (**Table 2**, PCA 1 - *Post-birth hospitalization*) and second factors (Apgars) carried the main weight, 30 and 11%, respectively and together explain most of the variability. Gestational age, birth weight and severe respiratory factors explain less variability, but were effective predictors of ultrasound brain abnormalities. The logistic regression showed that post-birth hospitalization course [ $\text{Exp}(B) = 3.08$ ;  $p < 0.001$ ], apgars ( $\text{Exp}(B) = 0.61$ ;  $p < 0.001$ ), gestational and severe respiratory problems [i.e., asphyxia and pneumothorax;  $\text{Exp}(B) = 2.37$ ;  $p < 0.01$ ], and NEC and hemodynamic [ $\text{Exp}(B) = 1.58$ ;  $p < 0.05$ ] were significant predictors of

ultrasound brain abnormalities [ $\text{constant Exp}(B) = 0.584$ ;  $p < 0.01$ ]. On the other hand, respiratory distress, ventilation and *in vitro* fertilization, although more frequent in the group with brain injury, were less determinant of brain injury.

### School Aged Children (8–16 Years Old)

For Phase II, 124 children were eligible and 41 (33%) agreed to participate. Of them, 2 had no MRI scan, 2 no neuropsychological assessment, and 8 had poor quality MRI due to motion artifacts, leaving a final sample of 29 VP-VLBW children (16 males, 55%, mean age at scan = 11.38, SD = 2.82). Within the initial control group ( $n = 20$ ), 6 had poor quality MRI, so 14 participants formed the final control group (9 males, 64%, mean age at scan = 10.90, SD = 2.67). Both VP-VLBW ( $n = 29$ ) and control groups ( $n = 14$ ) had similar ages at scan ( $t_{41} = -0.50$ ,  $p = 0.62$ ), similar gender proportion ( $X_1^2 = 0.32$ ,  $p = 0.74$ ), and similar parental annual family income ( $t_{41} = 1.62$ ,  $p = 0.13$ ).

### Neuropsychological Results at Ages 8–16

At age 8–16, VP-VLBW children's mean full scale IQ (WISC) was 11 points below control levels, with perceptual reasoning index especially affected (see **Table 3**). Mean scores in phonological fluency (ENFEN; executive function), were lower in the target group relative to control levels. Teachers reported learning difficulties (BASC-T) and poorer academic results in the VP-VLBW group. Nevertheless, the VP-VLBW had intact selective attention, impulsivity, vigilance, and resistance to (STROOP) interference, as well as spatial, everyday memory, and the different forms of recognition, learning and delayed memory assessed by the general memory and learning test TOMAL. However, the TOMAL test revealed poor performance in two measures of working-memory – immediate memory for stories and inverse letter sequencing.

In sum, working and verbal immediate memory appear to be below control levels as well as general cognitive abilities measured by the intelligence test. The impairments, even if mild, may preclude learning difficulties as reported by the teachers (BASC-T, VP-VLBW mean =  $51.54 \pm 8.15$ ; control =  $45.25 \pm 10.45$ ;  $p = 0.07$ ). These children's attention and spatial and everyday memory were at control levels.

### Brain Gray Matter Integrity

A 5.7%, decreased total GM and 10% subcortical GM volumes ( $F = 8.68$ ,  $p < 0.01$ ;  $F = 6.91$ ,  $p < 0.05$ , respectively) were observed in the VP-VLBW group relative to control levels. After Bonferroni correction for multiple comparisons, significant decreased volumes were found bilaterally in the left and right thalamus, and left ventral diencephalon including hypothalamus, basal forebrain, sublenticular extended amygdala, and ventral tegmentum (although the last three are not part of the diencephalon, Freesurfer software includes them together as part of it) in the VP-VLBW group. This group had significant decreased cortical volume in right fusiform gyrus and enlarged left lateral ventricle relative to control levels, but no correlations with neuropsychological variables were observed. Surface cortical area in children VP-VLBW was increased in right entorhinal cortex. Values for volumes and areas are reported in **Table 3**.

**TABLE 2 |** Neonatal data of babies born very preterm/very low birth weight with presence/absence of ultrasound brain abnormalities. Summary of results from the principal component (PCA) and the multivariate logistic regression analyses.

Neonatal data	n	Brain abnormality (n = 72)	No brain abnormality (n = 124)	U Mann Whitney	Cohen's d value
		Median (IQR)	Median (IQR)		
Gestational age (weeks)	196	29 (28–31)	30 (28–31)	3733.50*	0.33
Birth weight (g)	196	1126 (950–1300)	1225 (1075–1368)	3472.00**	0.38
Body length (cm)	196	37 (35–39.4)	38 (36.6–40)	3822.50	0.27
Head circumference (cm)	196	27 (25–28)	27 (26–28)	3714.00*	0.33
Apgar 1'	196	6 (4.2–8)	8 (6–8)	3417.00**	0.47
Apgar 5'	196	8 (7–9)	9 (8–9)	3206.50***	0.40
Mechanical ventilation	196	6.50 (1–14.5)	1 (0–4)	2588.00***	–0.73
Oxygen therapy	196	20 (3–53)	8 (2–30)	3528.50*	–0.54
Hospitalization	196	65.50 (51.25–88)	50 (40.25–59)	2519.50***	–0.75
Neon. intensive care unit	196	31.50 (18–53.25)	19.50 (10.25–29.75)	2724.50***	–0.74
		N (%)	N (%)	$\chi^2_{(1)}$	OR-CI
Hypotension	195	27 (19)	13 (16)	5.89**	0.41–0.19–0.85*
Asphyxia	196	11 (8)	1 (1)	11.04***	0.07–0.01–0.53**
Resp. distress	196	82 (59)	65 (81)	6.16**	0.42–0.21–0.84*
Pneumothorax	195	6 (4)	0	7.13**	0.94–0.90–0.99**
Necrotizing enterocolitis	196	26 (19)	10 (12)	9.55**	0.3–0.14–0.66**
Retinop. of prematurity	196	44 (32)	23 (29)	9.42**	0.38–0.21–0.71**
Principal component analysis		PCA weight	Explained variance (%)	OR (95% CI)	p
<i>PC 1 – Post-birth hospitalization</i>			30.586	3.08 (1.89–4.99)	0.000**
	Hospitalization (days)	0.866			
	Neonatal intens. care unit (days)	0.856			
	Mechanical ventilation (days)	0.825			
	Oxygen therapy (days)	0.679			
	Surgeries	0.602			
	Retinopathy of prematurity	0.574			
<i>PC 2 - Apgars</i>			11.290	0.61 (0.43–0.87)	0.006**
	Apgar 1'	0.905			
	Apgar 5'	0.864			
<i>PC 3 – Respiratory distress and ventilation</i>			8.597	1.34 (0.95–1.89)	0.096
	Respiratory distress	0.856			
	Mechanical ventilation (freq.)	0.651			
<i>PC 4 – Gestational and severe respiratory problems</i>			6.815	2.37 (1.23–4.55)	0.010*
	Gestational age (weeks)				
	Birth weight (g)				
	Asphyxia	0.749			
	Pneumothorax	0.689			
<i>PC 5 – NEC and hemodynamic</i>			6.399	1.58 (1.09–2.27)	0.015*
	Necrotizing enterocolitis	0.799			
	Hypotension	0.566			
<i>PC 6 – Fertilization treatments</i>			5.992	0.69 (0.45–1.05)	0.083
	<i>In vitro</i> fertilization	0.916			

\* $p \leq 0.05$ , \*\* $p \leq 0.01$ , \*\*\* $p \leq 0.001$ .

No differences in global cortical thickness were found, but cortical thickness in several brain areas was negatively correlated with full scale IQ, so the lower the IQ the thicker the cortex (see spatial correlation in **Figure 1**). Furthermore, cortical thickness was also negatively correlated with the perceptual reasoning index and the subscales of information, block design, and arithmetic in the VP-VLBW group.

As illustrated in **Figure 1**, full scale IQ correlated negatively with thickening of frontal pole, medial prefrontal cortex (mPFC, approximately in areas 32 and 8/9), and anterior cingulate cortex (approximately area 24), left (posterior) inferior frontal gyrus, sensory and motor areas, dorsal and posterior insular cortex, posterior superior temporal gyrus, and extrastriate visual cortex. However, the neonatal clinical data had not predictive value

**TABLE 3** | Neuropsychological and gray matter volume (mm<sup>3</sup>) differences in control and preterm groups.

Test	Control (n = 14) Mean (SEM)	Preterm (n = 29) Mean (SEM)	F <sub>1,41</sub> (p)
<i>Intelligence (WISC IV)</i>			
Full IQ	112.57 (3.83)	101.69 (3.06)	4.46 (0.04)*
Perceptual reasoning	109.07 (4.06)	96.97 (3.18)	5.07 (0.03)*
Block design <sup>1</sup>	10.93 (0.67)	8.66 (0.63)	4.96 (0.03)*
Information <sup>1</sup>	13.00 (0.59)	10.55 (0.58)	6.80 (0.01)**
Arithmetic <sup>1</sup>	12.86 (0.67)	9.59 (0.70)	8.58 (0.01)**
<i>General memory (TOMAL)</i>			
Immediate memory for stories <sup>1</sup>	14.29 (0.69)	11.93 (0.55)	6.41 (0.02)*
Letters backward <sup>1</sup>	12.00 (1.14)	9.41 (0.48)	6.09 (0.02)*
<i>Executive function (ENFEN)</i>			
Phonological fluency <sup>1,2</sup>	0.05 (0.25)	-1.03 (0.32)	4.09 (0.01)**
<b>Brain region</b>			
<i>Left</i>			
Thalamus	8247.97 (907.33)	7362.94 (563.73)	12.03 (0.001)
Lateral ventricle	5684.77 (2730.78)	10117.43 (5871.07)	10.77 (0.002)
Ventral diencephalon <sup>T</sup>	4038.12 (506.15)	3559.78 (282.80)	14.14 (0.001)
<i>Right</i>			
Thalamus	7987.00 (884.50)	7043.21 (559.03)	15.01 (≤ 0.001)
Fusiform gyrus cortex	11071.00 (1393.64)	9936.41 (1011.79)	17.21 (≤ 0.001)
Entorhinal cortex area (mm <sup>2</sup> )	374.28 (75.14)	458.28 (67.49)	15.09 (≤ 0.001)

<sup>1</sup>Subtests, <sup>2</sup>Standard z scores, <sup>T</sup>Ventral diencephalon in FreeSurfer includes: hypothalamus, basal forebrain, sublenticular extended amygdala and ventral tegmentum (although the last one is part of the midbrain). \* $p \leq 0.05$ , \*\* $p \leq 0.01$ .

in terms of prediction for the neuropsychological nor brain imaging parameter.

### Brain White Matter Integrity

After correction for multiple comparisons, significant differences in WM voxels between groups ( $p < 0.05$ ) are shown in **Figure 2**. According to the segmentation from previous studies (Córcoles-Parada et al., 2017), results showed significant decreased FA values in preterm born children in the WM of mPFC areas 14, 24, 32, and 25 (**Figure 2A** in red-yellow), and diencephalic WM (**Figure 2C**). In addition, decreased FA was observed in the medial parietal WM, pyramidal tract, and optic radiation. None of the WM areas showed significant increase in FA in the preterm group relative to the term-born group.

Voxels with significant increased RD values overlapped with regions of decreased FA values (**Figures 2B,D**, in blue) except for the medial parietal region, where this overlap is less evident.

## DISCUSSION

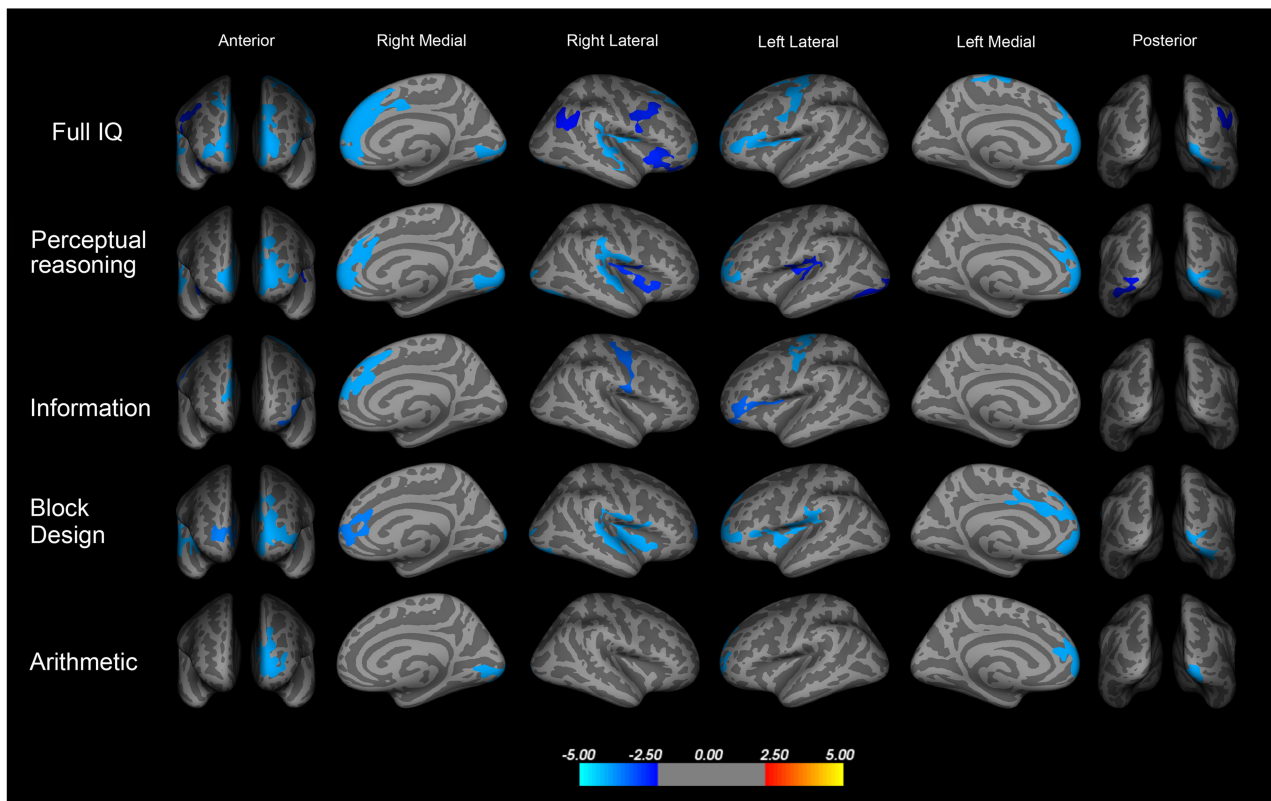
Here we examined a cohort of children who were both born with less than 32 gestational weeks and less than 1500g as babies and at a later stage in development; i.e., 8–16 years of age. This cohort study had a percentage of preterm babies (8%) like that reported by other countries, with circa 1% born with same gestation and birth weight. Data presented here confirmed that one third of the babies had ultrasound brain abnormalities and, of those, still a quarter had severe neurological problems. Those children with ultrasound brain abnormalities had lower GA, birth weight,

cranial perimeter, and Apgars; together with hospitalization course (i.e., hypotension, necrotizing enterocolitis, retinopathy of prematurity), and severe respiratory complications such as asphyxia and pneumothorax. This confirms previous data on the frequent postnatal comorbidities of the preterm infant (Wheater and Rennie, 2000; Schmidt et al., 2003; Becher et al., 2004; Hintz et al., 2005; Schulzke et al., 2007). As several variables seem to interact and, it seems difficult to predict neonatal brain injury from a specific clinical risk factor (Becher et al., 2004; Limperopoulos et al., 2007; Thompson et al., 2019).

Subtle neurodevelopmental deficits are difficult, if not impossible, to detect at such an early stage - one basis for looking at much older children in the second part of the study.

### Neuropsychological Consequences of Prematurity at 8–16 Years Old

Children born with very low birth weight (VP-VLBW), but who could be considered healthy as they had neither brain injuries detectable by ultrasound at birth or MRI later in life, however: a) not only VP-VLBW children had IQs below control levels, but, importantly, cortical thickness in higher order processing areas of the cerebral cortex was correlated negatively with IQ; and b) they had deficits in immediate memory (immediate memory for stories and letters backward) and executive function (verbal fluency), but spared basic attentional functions and memory (general, spatial and episodic). These impairments, even if mild, seem to hinder school results and learning levels as reported by the teachers.



**FIGURE 1** | Spatial negative correlation of cortical thickness and intelligence quotient (IQ) in children born very preterm and with VLBW at ages 8–16 ( $p \leq 0.05$ , corrected for ICV, age, and gender). Thickness of high order processing cortical areas (in blue) was associated with full scale IQ, specifically with perceptual reasoning index, and the subscales of information, block design, and arithmetic. Perceptual reasoning: frontal pole, mPFC (areas 24, 32, and 9), insula, posterior superior temporal gyrus, right inferior parietal cortex and extra striate visual cortex; Information: left inferior frontal and superior frontal gyrus, sensory and motor areas; Block design: left frontal pole and anterior cingulate cortex (area 24), superior medial frontal gyrus (areas 32 and 8/9), left inferior parietal cortex, and left extrastriate visual cortex, right posterior superior temporal gyrus, and insula; Arithmetic: left frontal pole and extrastriate visual cortex (*unpublished data*).

## Intelligence Quotient

The lower IQ in the VP-VLBW group in this study is in agreement with previous reports (Isaacs et al., 2003), even when applying different methods (Tideman, 2000; Weisglas-Kuperus et al., 2009). Within the WISC-IV subtests, our study detected deficits in the preterm children in arithmetic, information, and block design, which is in agreement with previous studies (Hack et al., 2002; Tulsky, 2003; Kulseng et al., 2006; Taylor et al., 2009; Løhaugen et al., 2010). In particular, the arithmetic subtest has been described as a multifaceted test that requires mathematical and working memory skills among others and in our study were the ones that showed worst outcome (Tulsky, 2003). Mathematical problems have been previously found to be especially common in preterm children, even when controlling for IQ and neurodevelopmental disorders (Taylor et al., 2009). Statistical differences on the block design subtest, which seems to be one of the most sensitive subtests to clinical conditions, are also in accordance with previous findings (Hack et al., 2002; Tulsky, 2003; Kulseng et al., 2006). No further significant differences were observed when participants were re-grouped by age ( $\leq 11$  vs.  $> 12$  years), indicating that age was not a confounding variable in this study.

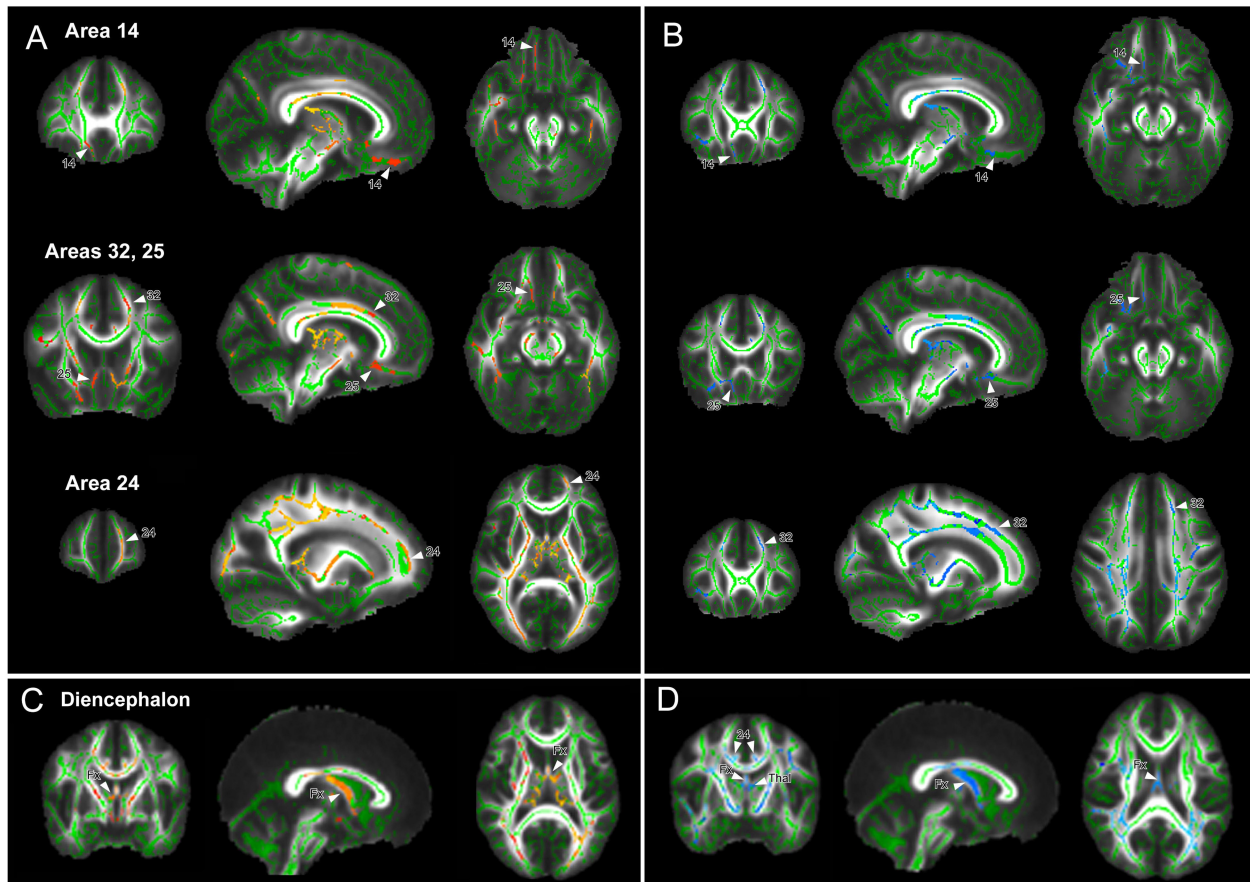
## Attention

Although attentional deficits are often diagnosed in preterm cohorts (Bhutta et al., 2002; Rommel et al., 2019), there are variable findings when profiling the impaired subdomains in preterm cohorts with some reporting deficits in only some of the attentional networks (Bayless and Stevenson, 2007; Fazzi et al., 2009; Mulder et al., 2011; Cserjesi et al., 2012). In our study, some of the basic components of attention were preserved in the VP-VLBW group. However, they had poorer immediate memory and phonological fluency relative to control levels, suggesting that higher order executive functions, likely dependent on prefrontal connectivity with cortical (temporal, parietal) and subcortical structures (diencephalon, striatum), had been affected.

## General and Episodic Memory

Other deficit usually reported in preterm children are episodic-like memory problems associated with hippocampal damage (Isaacs et al., 2001; Giménez et al., 2004; Rose et al., 2011; Aanes et al., 2019; Strahle et al., 2019). There is, however, recent controversy (Brunnemann et al., 2013; Omizzolo et al., 2013; Thompson et al., 2014). This contradictory data is likely to be related with the magnitude of the decrease in hippocampal





**FIGURE 2 |** White matter regions with significant changes in fractional anisotropy (FA) and radial diffusivity (RD) after correction for intracranial volume, age, and gender ( $p \leq 0.05$ ). **(A)** Cortical regions with decreased FA (red-yellow) and **(B)** with increased RD (blue) in the very preterm/very low birth weight group. Decreased FA/increased RD was found in medial frontal areas, temporal, and extrastriate visual and parietal white matter. **(C)** Significant decreased FA (red-yellow) and **(D)** increased RD (blue) in diencephalon, including the fornix (Fx) and thalamic white matter (Thal) in children in the very preterm/very low birth weight group.

volumes in preterm babies – from 10 to 16%, with only occasional cases with 20% volume reduction or over. In our study, general memory (TOMAL), spatial, and everyday memory (Rivermead Behavioral Memory Test) were spared. In addition, we observed no reduction in hippocampal volume (data not shown) and no correlations were found between hippocampal volume and neuropsychological variables. However, our cohort of children VPT-VLBW did have reduced immediate memory for stories and letters backward below control levels, again confirming published data (Isaacs et al., 2003). These results might be indicative of weak semantic and sequential immediate recall and working memory (Ramsay and Reynolds, 1995). Verbal memory has been associated with a decreased integrity of the fornix (Nosarti et al., 2014), but further research on the possible changes of the anatomical and functional organization of the fornix, thalamic, and frontal connectivity in preterm children is required.

### Gray Matter Integrity

Previous studies have shown that cortical thickness is an indicator of the number of neurons per cortical column (la Fougère et al., 2011) as well as of the folding and gyrification of the cortex

(Panizzon et al., 2009). In our study, even global cortical thickness was at control levels in the VP-VLBW group, cortical thickness in certain areas was negatively correlated with full scale IQ as well as with some of the subscales whereby the target group was below control levels. This correlation indicates that the thicker the reported areas, the worst performance in full scale IQ and some of its subscales. Previous studies have found disparate results; while some of them showed a positive relation between cortical thickness and IQ (Skranes et al., 2012; Bjuland et al., 2013; Mürner-Lavanchy et al., 2018), others found a negative association (Nam et al., 2015; Sølvsnes et al., 2015).

Our results also showed a paradoxically larger right entorhinal area while some other studies show reductions in cortical thickness or surface area of the entorhinal cortex (Skranes et al., 2012, 2013). One potential explanation for this discrepancy is the different age of samples, and the possible atypical cortical development in terms of timing and patterns in preterm entorhinal cortex.

Although the relationship between cortical thickness and cognitive status is not completely defined, some degree of thinning is expected in the cerebral cortex during development.

Our data suggest that cortical thinning is occurring in less degree in some areas of the cortex in the VP-VLBW group, which could explain, at least in part, the lower IQ level. This finding requires further research with longitudinal studies to obtain the full picture of the cortical development of the preterm brain.

In line with previous studies with preterm or late-preterm infants (Munakata et al., 2013), children (Reiss et al., 2004; Rogers et al., 2014), adolescents (Nagy et al., 2009), and adults (Pascoe et al., 2019), our study shows also a smaller volume in total GM, subcortical GM (Taylor et al., 2011), thalamus (Nosarti et al., 2008; Martinussen et al., 2009; Bjuland et al., 2014), and fusiform gyrus (Nosarti et al., 2008), as well as enlarged lateral ventricles (Nosarti et al., 2002; Allin et al., 2004; Bjuland et al., 2014) relative to control levels. We also found smaller volume in left ventral diencephalon that includes hypothalamus, basal forebrain, sublenticular extended amygdala and ventral tegmentum. Given the importance of these structures in emotional, social, reward processing, this may explain, at least in part, the frequent need of psychiatric assistance in children born preterm as reported in both large cohort studies (Larroque et al., 2008; Moore et al., 2012).

### White Matter Integrity

In line with previous studies in VP-VLBW neonates (Miller et al., 2002), infants (Partridge et al., 2004; Lean et al., 2019), children (Nagy et al., 2003; Constable et al., 2008; Young et al., 2019), adolescents (Thomas et al., 2005; Skranes et al., 2007; Mullen et al., 2011), and young adults (Eikenes et al., 2011; Pascoe et al., 2019), our study shows significant decreased FA and increased RD in higher order association areas of the such as frontal, temporal and parietal regions and in the diencephalic WM. As AD and MD appeared affected in the preterm group, this decreased WM integrity might be due, therefore, to increased diffusivity in the mean perpendicular axis ( $\lambda_2$  and  $\lambda_3$ ). Although the precise mechanisms of WM injury in prematurity are still unclear, global delay in glial maturation after premature brain injury has been previously reported (Salmaso et al., 2014). Animal model data support the hypothesis that gliogenesis, oligodendrocytes and myelin may be at the root of the changes seen in WM integrity in prematurity. In normal development, myelin commences to be visible after 24 weeks of gestation and progress until 36 gestational weeks (Counsell and Boardman, 2005). This supports the hypothesis that migratory pathways from ventricular zone to cerebral cortex and cortico-diencephalic and cortico-striatal connections may be vulnerable to prematurity and other insults occurring during this prenatal period. Further research is needed in the normal and abnormal development of these WM pathways.

### Limitations of the Study

We acknowledge several possible limitations in the present study. One factor that may be contributing to different results in brain-behavior studies of preterm children is the different inclusion/exclusion criteria. Here we examined children who were born very preterms and had VLBW, but who could be considered relatively 'healthy' as they had neither brain injuries

detectable by ultrasound at birth nor by MRI at school age. The design of the study excluded children with any form of brain abnormality.

This made our sample very restrictive and may be biased toward the high performance. However, despite of this, the sample of our children's IQ was still below about 10 points below control level. We believe this is a robust result and consistent with the literature. Nevertheless, our results are optimistic in terms of spared functions in at risk prematurity, and contribute to define the phenotype of this population. This study calls for further research on whether there is a specific cognitive profile in prematurity with some cognitive functions altered and some other spared.

The necessary high quality MRI data (i.e., no movement artifacts) reduced the size of our sample, and this is another limitation: the small number of participants, especially in the control group. This was compensated by using multiple (5000) permutations in FSL, a stringent multiple correction method for false discovery. Brain injuries cause methodological problems in terms of reliability of the registration process of gray and WM analysis, and therefore, we use stringent inclusion criteria (i.e., no neurological impairment or brain damage) to address this and secured the quality of the data.

Further analysis with larger numbers of participants and longitudinal studies will allow more accurate results on the influence of clinical variables on neonatal brain damage and later neuropsychological development.

## CONCLUSION

In conclusion, the interplay between different perinatal variables has a clear association with brain damage as identified with ultrasound in new born babies with gestational age  $\leq 32$  and birth weight  $\leq 1500$  g. Selective increased of cortical thickness in higher order processing areas of the frontal, perisylvian, sensory motor and visual cortices is associated with specific components of lower IQ scores in the preterm group. Furthermore, decreased integrity of WM tracts is suggestive of higher order cognitive processing deficits. Identifying these specific neurocognitive deficits might be of help to design interventions aimed to improve academic achievements and mental health, and ultimately, adaptability later in life to society.

## DATA AVAILABILITY

The datasets generated for this study are available on request to the corresponding author.

## ETHICS STATEMENT

This study was reviewed and approved by the Ethics Committee of the University of Castilla-La Mancha Medical School and the Albacete University Hospital clinical research committee.

Written informed consent was obtained from all the participants and their parents.

## AUTHOR CONTRIBUTIONS

MC-P contributed to the white matter analysis and writing of the manuscript. RG-M contributed to the data collection and analysis of the neonatal cohort. VS-d-P contributed to the analysis of the gray matter. LL contributed in collecting the data from the medical records of the neonatal cohort. EP-H contributed in the designing of the neuropsychological protocol. FM contributed in the acquisition of the MRI scans. AM provided patients and advice on study design. IO assessed the neurology of the participants. PS contributed in the designing of the study and the recruitment of M.Sc. and Ph.D. students. MU-M contributed in the acquisition of the neuropsychological data. JC contributed in the focused analysis of the fornix. CC contributed in tutoring MC-P during her stay for learning DTI processing. MM-L designed the study, prepared the manuscript and figures for publication,

supervised all the students involved, granted the funding, and analyzed the neuropsychological data and the brain MRI alongside the students.

## FUNDING

This study was supported by the Spanish Government Institute Carlos III (FIS PI11/02860), Spanish Ministry of Health to MM-L, and the University of Castilla-La Mancha mobility Grant VA13815001497 and Erasmus + grant to MC-P at the Institute of Child Health, University College London, London, United Kingdom.

## ACKNOWLEDGMENTS

We are grateful to Ricardo Insausti for the advice and support during the course of this study, and to Richard Morris for the comments on the manuscript. We thank the participants and their families.

## REFERENCES

- Aanes, S., Bjuland, K. J., Sripada, K., Sølshes, A. E., Grunewaldt, K. H., Håberg, A., et al. (2019). Reduced hippocampal subfield volumes and memory function in school-aged children born preterm with very low birthweight (VLBW). *Neuroimage Clin.* 23:101857. doi: 10.1016/j.nicl.2019.101857
- Akazawa, K., Chang, L., Yamakawa, R., Hayama, S., Buchthal, S., Alicata, D., et al. (2015). Probabilistic maps of the white matter tracts with known associated functions on the neonatal brain atlas: application to evaluate longitudinal developmental trajectories in term-born and preterm-born infants. *Neuroimage* 128, 167–179. doi: 10.1016/j.neuroimage.2015.12.026
- Allin, M., Henderson, M., Suckling, J., Nosarti, C., Rushe, T., Fearon, P., et al. (2004). Effects of very low birthweight on brain structure in adulthood. *Dev. Med. Child Neurol.* 46, 46–53. doi: 10.1111/j.1469-8749.2004.tb00433.x
- Anjari, M., Srinivasan, L., Allsop, J. M., Hajnal, J. V., Rutherford, M. A., Edwards, A. D., et al. (2007). Diffusion tensor imaging with tract-based spatial statistics reveals local white matter abnormalities in preterm infants. *Neuroimage* 35, 1021–1027. doi: 10.1016/j.neuroimage.2007.01.035
- Bayless, S., and Stevenson, J. (2007). Executive functions in school-age children born very prematurely. *Early Hum. Dev.* 83, 247–254. doi: 10.1016/j.earlhumdev.2006.05.021
- Becher, J. C., Bell, J. E., Keeling, J. W., McIntosh, N., and Wyatt, B. (2004). The scottish perinatal neuropathology study: clinicopathological correlation in early neonatal deaths. *Arch. Dis. Child. Fetal Neonatal Ed.* 89, F399–F407. doi: 10.1136/adc.2003.037606
- Bhutta, A. T., Cleves, M. A., Casey, P. H., Cradock, M. M., and Anand, K. J. S. (2002). Cognitive and behavioral outcomes of school-aged children who were born preterm: a meta-analysis. *JAMA* 288, 728–737.
- Bjuland, K. J., Løhaugen, G. C. C., Martinussen, M., and Skranes, J. (2013). Cortical thickness and cognition in very-low-birth-weight late teenagers. *Early Hum. Dev.* 89, 371–380. doi: 10.1016/j.earlhumdev.2012.12.003
- Bjuland, K. J., Rimol, L. M., Løhaugen, G. C. C., and Skranes, J. (2014). Brain volumes and cognitive function in very-low-birth-weight (VLBW) young adults. *Eur. J. Paediatr. Neurol.* 18, 578–590. doi: 10.1016/j.ejpn.2014.04.004
- Brossard-Racine, M., Poretti, A., Murnick, J., Bouyssi-Kobar, M., McCarter, R., du Plessis, A. J., et al. (2017). Cerebellar Microstructural Organization is altered by complications of premature birth: a case-control study. *J. Pediatr.* 182, 28.e1–33.e1. doi: 10.1016/j.jpeds.2016.10.034
- Brunnemann, N., Kipp, K. H., Gortner, L., Meng-Hentschel, J., Papanagiotou, P., Reith, W., et al. (2013). Alterations in the relationship between hippocampal volume and episodic memory performance in preterm children. *Dev. Neuropsychol.* 38, 226–235. doi: 10.1080/87565641.2013.773003
- Conners, C. (2000). *Conners' Continuous Performance Test-II (CPT-II) Computer Program for Windows Technical Guide and Software Manual*. Toronto, ON: Multi-Health Systems Inc.
- Constable, R. T., Ment, L. R., Vohr, B. R., Kesler, S. R., Fulbright, R. K., Lacadie, C., et al. (2008). Prematurely born children demonstrate white matter microstructural differences at 12 years of age, relative to term control subjects: an investigation of group and gender effects. *Pediatrics* 121, 306–316. doi: 10.1542/peds.2007-2414
- Córcoles-Parada, M., Müller, N. C. J., Ubero, M., Serrano-Del-Pueblo, V. M., Mansilla, F., Marcos-Rabal, P., et al. (2017). Anatomical segmentation of the human medial prefrontal cortex. *J. Comp. Neurol.* 525, 2376–2393. doi: 10.1002/cne.24212
- Counsell, S. J., and Boardman, J. P. (2005). Differential brain growth in the infant born preterm: current knowledge and future developments from brain imaging. *Semin. Fetal Neonatal Med.* 10, 403–410. doi: 10.1016/j.siny.2005.05.003
- Cserjesi, R., Van Braeckel, K. N. J. A., Butcher, P. R., Kerstjens, J. M., Reijneveld, S. A., Bouma, A., et al. (2012). Functioning of 7-year-old children born at 32 to 35 weeks' gestational age. *Pediatrics* 130, e838–e846. doi: 10.1542/peds.2011-2079
- Dale, A. M., Fischl, B., and Sereno, M. I. (1999). Cortical surface-based analysis. I. Segmentation and surface reconstruction. *Neuroimage* 9, 179–194.
- Desikan, R. S., Ségonne, F., Fischl, B., Quinn, B. T., Dickerson, B. C., Blacker, D., et al. (2006). An automated labeling system for subdividing the human cerebral cortex on MRI scans into gyral based regions of interest. *Neuroimage* 31, 968–980. doi: 10.1016/j.neuroimage.2006.01.021
- Duerden, E. G., Halani, S., Ng, K., Guo, T., Foong, J., Glass, T. J. A., et al. (2019). White matter injury predicts disrupted functional connectivity and microstructure in very preterm born neonates. *Neuroimage Clin.* 21:101596. doi: 10.1016/j.nicl.2018.11.006
- Eikenes, L., Løhaugen, G. C., Brubakk, A.-M., Skranes, J., and Håberg, A. K. (2011). Young adults born preterm with very low birth weight demonstrate widespread white matter alterations on brain DTI. *Neuroimage* 54, 1774–1785. doi: 10.1016/j.neuroimage.2010.10.037
- Eryigit Madzwamuse, S., Baumann, N., Jaekel, J., Bartmann, P., and Wolke, D. (2015). Neuro-cognitive performance of very preterm or very low birth weight adults at 26 years. *J. Child Psychol. Psychiatry* 56, 857–864. doi: 10.1111/jcpp.12358
- Fazzi, E., Bova, S., Giovenzana, A., Signorini, S., Uggetti, C., and Bianchi, P. (2009). Cognitive visual dysfunctions in preterm children with periventricular

- leukomalacia. *Dev. Med. Child Neurol.* 51, 974–981. doi: 10.1111/j.1469-8749.2009.03272.x
- Fischl, B., and Dale, A. M. (2000). Measuring the thickness of the human cerebral cortex from magnetic resonance images. *Proc. Natl. Acad. Sci. U.S.A.* 97, 11050–11055. doi: 10.1073/pnas.200033797
- Fischl, B., Liu, A., and Dale, A. M. (2001). Automated manifold surgery: constructing geometrically accurate and topologically correct models of the human cerebral cortex. *IEEE Trans Med. Imaging* 20, 70–80. doi: 10.1109/42.906426
- Fischl, B., Salat, D. H., Busa, E., Albert, M., Dieterich, M., Haselgrove, C., et al. (2002). Whole brain segmentation: automated labeling of neuroanatomical structures in the human brain. *Neuron* 33, 341–355. doi: 10.1016/S0896-6273(02)00569-X
- Fischl, B., Salat, D. H., van der Kouwe, A. J. W., Makris, N., Ségonne, F., Quinn, B. T., et al. (2004a). Sequence-independent segmentation of magnetic resonance images. *Neuroimage* 23(Suppl. 1), S69–S84. doi: 10.1016/j.neuroimage.2004.07.016
- Fischl, B., van der Kouwe, A., Destrieux, C., Halgren, E., Ségonne, F., Salat, D. H., et al. (2004b). Automatically parcellating the human cerebral cortex. *Cereb. Cortex* 14, 11–22. doi: 10.1093/cercor/bhg087
- Fischl, B., Sereno, M. I., and Dale, A. M. (1999a). Cortical surface-based analysis. II: inflation, flattening, and a surface-based coordinate system. *Neuroimage* 9, 195–207. doi: 10.1006/nimg.1998.0396
- Fischl, B., Sereno, M. I., Tootell, R. B., and Dale, A. M. (1999b). High-resolution intersubject averaging and a coordinate system for the cortical surface. *Hum. Brain Mapp.* 8, 272–284. doi: 10.1002/(sici)1097-0193(1999)8:4<272::aid-hbm10>3.0.co;2-4
- Franz, A. P., Bolat, G. U., Bolat, H., Matijasevich, A., Santos, I. S., Silveira, R. C., et al. (2018). Attention-deficit/hyperactivity disorder and very preterm/very low birth weight: a meta-analysis. *Pediatrics* 141, e20171645. doi: 10.1542/peds.2017-1645
- Geldof, C. J. A., de Kieviet, J. F., Dik, M., Kok, J. H., van Wassenaer-Leemhuis, A. G., and Oosterlaan, J. (2013). Visual search and attention in five-year-old very preterm/very low birth weight children. *Early Hum. Dev.* 89, 983–988. doi: 10.1016/j.earlhumdev.2013.08.021
- Giménez, M., Junqué, C., Narberhaus, A., Caldú, X., Salgado-Pineda, P., Bargalló, N., et al. (2004). Hippocampal gray matter reduction associates with memory deficits in adolescents with history of prematurity. *NeuroImage* 23, 869–877. doi: 10.1016/j.neuroimage.2004.07.029
- Golden, C. (1978). *A Manual for the Clinical and Experimental Use of the Stroop Color and Word Test*. Chicago, IL: Stoelting.
- Hack, M., Flannery, D. J., Schluchter, M., Cartar, L., Borawski, E., and Klein, N. (2002). Outcomes in young adulthood for very-low-birth-weight infants. *N. Eng. J. Med.* 346, 149–157. doi: 10.1056/NEJMoa010856
- Hintz, S. R., Kendrick, D. E., Stoll, B. J., Vohr, B. R., Fanaroff, A. A., Donovan, E. F., et al. (2005). Neurodevelopmental and growth outcomes of extremely low birth weight infants after necrotizing enterocolitis. *Pediatrics* 115, 696–703. doi: 10.1542/peds.2004-2569
- Isaacs, E. B., Edmonds, C. J., Lucas, A., and Gadian, D. G. (2001). Calculation difficulties in children of very low birthweight: a neural correlate. *Brain* 124, 1701–1707. doi: 10.1093/brain/124.9.1701
- Isaacs, E. B., Vargha-Khadem, F., Watkins, K. E., Lucas, A., Mishkin, M., and Gadian, D. G. (2003). Developmental amnesia and its relationship to degree of hippocampal atrophy. *Proc. Natl. Acad. Sci. U.S.A.* 100, 13060–13063. doi: 10.1073/pnas.1233825100
- Kalpakidou, A. K., Allin, M. P. G., Walshe, M., Giampietro, V., McGuire, P. K., Rifkin, L., et al. (2014). Functional neuroanatomy of executive function after neonatal brain injury in adults who were born very preterm. *PLoS One* 9:e113975. doi: 10.1371/journal.pone.0113975
- Kulseng, S., Jennekens-Schinkel, A., Naess, P., Romundstad, P., Indredavik, M., Vik, T., et al. (2006). Very-low-birthweight and term small-for-gestational-age adolescents: attention revisited. *Acta Paediatr.* 95, 224–230. doi: 10.1111/j.1651-2227.2006.tb02211.x
- la Fougère, C., Grant, S., Kostikov, A., Schirrmacher, R., Gravel, P., Schipper, H. M., et al. (2011). Where in-vivo imaging meets cytoarchitectonics: the relationship between cortical thickness and neuronal density measured with high-resolution [18F]flumazenil-PET. *NeuroImage* 56, 951–960. doi: 10.1016/j.neuroimage.2010.11.015
- Larroque, B., Ancel, P.-Y., Marret, S., Marchand, L., André, M., Arnaud, C., et al. (2008). Neurodevelopmental disabilities and special care of 5-year-old children born before 33 weeks of gestation (the EPIPAGE study): a longitudinal cohort study. *Lancet* 371, 813–820. doi: 10.1016/S0140-6736(08)60380-60383
- Lean, R. E., Han, R. H., Smyser, T. A., Kenley, J. K., Shimony, J. S., Rogers, C. E., et al. (2019). Altered neonatal white and gray matter microstructure is associated with neurodevelopmental impairments in very preterm infants with high-grade brain injury. *Pediatr. Res.* doi: 10.1038/s41390-019-0461461 [Epub ahead of print].
- Limperopoulos, C., Bassan, H., Kalish, L. A., Ringer, S. A., Eichenwald, E. C., Walter, G., et al. (2007). Current definitions of hypotension do not predict abnormal cranial ultrasound findings in preterm infants. *Pediatrics* 120, 966–977. doi: 10.1542/peds.2007-2075
- Lockwood Estrin, G., Wu, Z., Deprez, M., Bertelsen, Á., Rutherford, M. A., Counsell, S. J., et al. (2019). White and grey matter development in utero assessed using motion-corrected diffusion tensor imaging and its comparison to ex utero measures. *MAGMA* 32, 473–485. doi: 10.1007/s10334-019-00743-5
- Loe, I. M., Adams, J. N., and Feldman, H. M. (2018). Executive function in relation to white matter in preterm and full term children. *Front. Pediatr.* 6:418. doi: 10.3389/fped.2018.00418
- Løhaugen, G. C. C., Gramstad, A., Evensen, K. A. I., Martinussen, M., Lindqvist, S., Indredavik, M., et al. (2010). Cognitive profile in young adults born preterm at very low birthweight. *Dev. Med. Child Neurol.* 52, 1133–1138. doi: 10.1111/j.1469-8749.2010.03743.x
- Malavolti, A. M., Chau, V., Brown-Lum, M., Poskitt, K. J., Brant, R., Synnes, A., et al. (2017). Association between corpus callosum development on magnetic resonance imaging and diffusion tensor imaging, and neurodevelopmental outcome in neonates born very preterm. *Dev. Med. Child Neurol.* 59, 433–440. doi: 10.1111/dmcn.13364
- Martinussen, M., Flanders, W. D., Fischl, B., Busa, E., Løhaugen, G. C., Skranes, J., et al. (2009). Segmental brain volumes, cognitive and perceptual correlates in 15-year old adolescents with low birth weight. *J. Pediatr.* 155, 848.e1–853.e1. doi: 10.1016/j.jpeds.2009.06.015
- Miller, S. P., Vigneron, D. B., Henry, R. G., Bohland, M. A., Ceppi-Cozzio, C., Hoffman, C., et al. (2002). Serial quantitative diffusion tensor MRI of the premature brain: development in newborns with and without injury. *J. Magn. Reson. Imaging* 16, 621–632. doi: 10.1002/jmri.10205
- Mitter, C., Prayer, D., Brugger, P. C., Weber, M., and Kasprjan, G. (2015). In vivo tractography of fetal association fibers. *PLoS One* 10:e0119536. doi: 10.1371/journal.pone.0119536
- Moore, T., Hennessy, E. M., Myles, J., Johnson, S. J., Draper, E. S., Costeloe, K. L., et al. (2012). Neurological and developmental outcome in extremely preterm children born in England in 1995 and 2006: the EPICure studies. *BMJ* 345:e7961. doi: 10.1136/bmj.e7961
- Mulder, H., Pitchford, N. J., and Marlow, N. (2011). Inattentive behaviour is associated with poor working memory and slow processing speed in very pre-term children in middle childhood. *Br. J. Educ. Psychol.* 81, 147–160. doi: 10.1348/000709910X505527
- Mullen, K. M., Vohr, B. R., Katz, K. H., Schneider, K. C., Lacadie, C., Hampson, M., et al. (2011). Preterm birth results in alterations in neural connectivity at age 16 years. *Neuroimage* 54, 2563–2570. doi: 10.1016/j.neuroimage.2010.11.019
- Munakata, S., Okada, T., Okahashi, A., Yoshikawa, K., Usukura, Y., Makimoto, M., et al. (2013). Gray matter volumetric MRI differences late-preterm and term infants. *Brain Dev.* 35, 10–16. doi: 10.1016/j.braindev.2011.12.011
- Mürner-Lavanchy, I., Rummel, C., Steinlin, M., and Everts, R. (2018). Cortical morphometry and cognition in very preterm and term-born children at early school age. *Early Hum. Dev.* 116, 53–63. doi: 10.1016/j.earlhumdev.2017.11.003
- Murray, A. L., Thompson, D. K., Pascoe, L., Leemans, A., Inder, T. E., Doyle, L. W., et al. (2016). White matter abnormalities and impaired attention abilities in children born very preterm. *NeuroImage* 124(Pt A), 75–84. doi: 10.1016/j.neuroimage.2015.08.044
- Nagy, Z., Ashburner, J., Andersson, J., Jbabdi, S., Draganski, B., Skare, S., et al. (2009). Structural correlates of preterm birth in the adolescent brain. *Pediatrics* 124, e964–e972. doi: 10.1542/peds.2008-3801
- Nagy, Z., Westerberg, H., Skare, S., Andersson, J. L., Lilja, A., Flodmark, O., et al. (2003). Preterm children have disturbances of white matter at 11 years of age as shown by diffusion tensor imaging. *Pediatr. Res.* 54, 672–679. doi: 10.1203/01.PDR.0000084083.71422.16

- Nam, K. W., Castellanos, N., Simmons, A., Froudust-Walsh, S., Allin, M. P., Walshe, M., et al. (2015). Alterations in cortical thickness development in preterm-born individuals: implications for high-order cognitive functions. *NeuroImage* 115, 64–75. doi: 10.1016/j.neuroimage.2015.04.015
- Nosarti, C., Al-Asady, M. H. S., Frangou, S., Stewart, A. L., Rifkin, L., and Murray, R. M. (2002). Adolescents who were born very preterm have decreased brain volumes. *Brain* 125, 1616–1623. doi: 10.1093/brain/awf157
- Nosarti, C., Giouroukou, E., Healy, E., Rifkin, L., Walshe, M., Reichenberg, A., et al. (2008). Grey and white matter distribution in very preterm adolescents mediates neurodevelopmental outcome. *Brain* 131, 205–217. doi: 10.1093/brain/awm282
- Nosarti, C., Nam, K. W., Walshe, M., Murray, R. M., Cuddy, M., Rifkin, L., et al. (2014). Preterm birth and structural brain alterations in early adulthood. *NeuroImage Clin.* 6, 180–191. doi: 10.1016/j.nicl.2014.08.005
- Omizzolo, C., Thompson, D. K., Scratch, S. E., Stargatt, R., Lee, K. J., Cheong, J., et al. (2013). Hippocampal volume and memory and learning outcomes at 7 years in children born very preterm. *J. Int. Neuropsychol. Soc.* 19, 1065–1075. doi: 10.1017/S1355617713000891
- Panizzon, M. S., Fennema-Notestine, C., Eyler, L. T., Jernigan, T. L., Prom-Wormley, E., Neale, M., et al. (2009). Distinct genetic influences on cortical surface area and cortical thickness. *Cereb. Cortex* 19, 2728–2735. doi: 10.1093/cercor/bhp026
- Partridge, S. C., Mukherjee, P., Henry, R. G., Miller, S. P., Berman, J. I., Jin, H., et al. (2004). Diffusion tensor imaging: serial quantitation of white matter tract maturity in premature newborns. *NeuroImage* 22, 1302–1314. doi: 10.1016/j.neuroimage.2004.02.038
- Pascoe, M. J., Melzer, T. R., Horwood, L. J., Woodward, L. J., and Darlow, B. A. (2019). Altered grey matter volume, perfusion and white matter integrity in very low birthweight adults. *NeuroImage Clin.* 22:101780. doi: 10.1016/j.nicl.2019.101780
- Pierrat, V., Marchand-Martin, L., Arnaud, C., Kaminski, M., Resche-Rigon, M., Lebeaux, C., et al. (2017). Neurodevelopmental outcome at 2 years for preterm children born at 22 to 34 weeks' gestation in France in 2011: EPIPAGE-2 cohort study. *BMJ* 358:j3448. doi: 10.1136/bmj.j3448
- Portellano, J., Martínez-Arias, R., and Zumárraga, L. (2009). *ENFEN: Evaluación Neuropsicológica de las Funciones Ejecutivas en Niños*. Madrid: TEA Ediciones.
- Ramsay, M. C., and Reynolds, C. R. (1995). Separate digits tests: a brief history, a literature review, and a reexamination of the factor structure of the test of memory and learning (TOMAL). *Neuropsychol. Rev.* 5, 151–171. doi: 10.1007/bf02214760
- Reiss, A. L., Kesler, S. R., Vohr, B., Duncan, C. C., Katz, K. H., Pajot, S., et al. (2004). Sex differences in cerebral volumes of 8-year-olds born preterm. *J. Pediatr.* 145, 242–249. doi: 10.1016/j.jpeds.2004.04.031
- Reynolds, C. R., and Bigler, E. D. (1994). *TOMAL Test of Memory and Learning: Examiner's Manual*. Austin, TX: Pro-Ed.
- Reynolds, C. R., and Kamphaus, R. (1992). *BASC Behavior Assessment System for Children. First Edition. Interpretative Manual*. Circle Pines, MN: American Guidance Service.
- Rickham, P. P. (1964). Human experimentation: code of ethics of the World Medical Association. *Br. Med. J.* 2:177. doi: 10.1136/bmj.2.5402.177
- Rogers, C. E., Barch, D. M., Sylvester, C. M., Pagliaccio, D., Harms, M. P., Botteron, K. N., et al. (2014). Altered gray matter volume and school age anxiety in children born late preterm. *J. Pediatr.* 165, 928–935. doi: 10.1016/j.jpeds.2014.06.063
- Rommel, A.-S., James, S.-N., McLoughlin, G., Michelini, G., Banaschewski, T., Brandeis, D., et al. (2019). Impairments in error processing and their association with ADHD symptoms in individuals born preterm. *PLoS One* 14:e0214864. doi: 10.1371/journal.pone.0214864
- Rorden, C., and Brett, M. (2000). Stereotaxic display of brain lesions. *Behav. Neurol.* 12, 191–200. doi: 10.1155/2000/421719
- Rose, S. A., Feldman, J. F., Jankowski, J. J., and Van Rossem, R. (2011). The structure of memory in infants and toddlers: an SEM study with full-terms and preterms. *Dev. Sci.* 14, 83–91. doi: 10.1111/j.1467-7687.2010.00959.x
- Rose, S. E., Hatzigeorgiou, X., Strudwick, M. W., Durbridge, G., Davies, P. S. W., and Colditz, P. B. (2008). Altered white matter diffusion anisotropy in normal and preterm infants at term-equivalent age. *Magn. Reson. Med.* 60, 761–767. doi: 10.1002/mrm.21689
- Salmaso, N., Jablonska, B., Scafidi, J., Vaccarino, F. M., and Gallo, V. (2014). Neurobiology of premature brain injury. *Nat. Neurosci.* 17, 341–346. doi: 10.1038/nm.3604
- Schmidt, B., Asztalos, E. V., Roberts, R. S., Robertson, C. M. T., Sauve, R. S., Whitfield, M. F., et al. (2003). Impact of bronchopulmonary dysplasia, brain injury, and severe retinopathy on the outcome of extremely low-birth-weight infants at 18 months: results from the trial of indomethacin prophylaxis in preterms. *JAMA* 289, 1124–1129.
- Schulzke, S. M., Deshpande, G. C., and Patole, S. K. (2007). Neurodevelopmental outcomes of very low-birth-weight infants with necrotizing enterocolitis: a systematic review of observational studies. *Arch. Pediatr. Adolesc. Med.* 161, 583–590. doi: 10.1001/archpedi.161.6.583
- Ségonne, F., Dale, A. M., Busa, E., Glessner, M., Salat, D., Hahn, H. K., et al. (2004). A hybrid approach to the skull stripping problem in MRI. *NeuroImage* 22, 1060–1075. doi: 10.1016/j.neuroimage.2004.03.032
- Skranes, J., Løhaugen, G. C. C., Evensen, K. A. I., Indredavik, M. S., Haraldseth, O., Dale, A. M., et al. (2012). Entorhinal cortical thinning affects perceptual and cognitive functions in adolescents born preterm with very low birth weight (VLBW). *Early Hum. Dev.* 88, 103–109. doi: 10.1016/j.earlhumdev.2011.07.017
- Skranes, J., Løhaugen, G. C. C., Martinussen, M., Häberg, A., Brubakk, A.-M., and Dale, A. M. (2013). Cortical surface area and IQ in very-low-birth-weight (VLBW) young adults. *Cortex* 49, 2264–2271. doi: 10.1016/j.cortex.2013.06.001
- Skranes, J., Vangberg, T. R., Kulseng, S., Indredavik, M. S., Evensen, K. A. I., Martinussen, M., et al. (2007). Clinical findings and white matter abnormalities seen on diffusion tensor imaging in adolescents with very low birth weight. *Brain* 130, 654–666. doi: 10.1093/brain/awm001
- Sølsnes, A. E., Grunewaldt, K. H., Bjuland, K. J., Stavnes, E. M., Bastholm, I. A., Aanes, S., et al. (2015). Cortical morphometry and IQ in VLBW children without cerebral palsy born in 2003–2007. *NeuroImage Clin.* 8, 193–201. doi: 10.1016/j.nicl.2015.04.004
- Strahle, J. M., Triplett, R. L., Alexopoulos, D., Smyser, T. A., Rogers, C. E., Limbrick, D. D., et al. (2019). Impaired hippocampal development and outcomes in very preterm infants with perinatal brain injury. *NeuroImage Clin.* 22:101787. doi: 10.1016/j.nicl.2019.101787
- Taylor, H. G., Espy, K. A., and Anderson, P. J. (2009). Mathematics deficiencies in children with very low birth weight or very preterm birth. *Dev. Disabil. Res. Rev.* 15, 52–59. doi: 10.1002/ddrr.51
- Taylor, H. G., Filipek, P. A., Juranek, J., Bangert, B., Minich, N., and Hack, M. (2011). Brain volumes in adolescents with very low birth weight: effects on brain structure and associations with neuropsychological outcomes. *Dev. Neuropsychol.* 36, 96–117. doi: 10.1080/87565641.2011.540544
- Thomas, B., Eyssen, M., Peeters, R., Molenaers, G., Van Hecke, P., De Cock, P., et al. (2005). Quantitative diffusion tensor imaging in cerebral palsy due to periventricular white matter injury. *Brain* 128, 2562–2577. doi: 10.1093/brain/awh600
- Thompson, D. K., Chen, J., Beare, R., Adamson, C. L., Ellis, R., Ahmadzai, Z. M., et al. (2016). Structural connectivity relates to perinatal factors and functional impairment at 7 years in children born very preterm. *NeuroImage* 134, 328–337. doi: 10.1016/j.neuroimage.2016.03.070
- Thompson, D. K., Kelly, C. E., Chen, J., Beare, R., Alexander, B., Seal, M. L., et al. (2019). Early life predictors of brain development at term-equivalent age in infants born across the gestational age spectrum. *NeuroImage* 185, 813–824. doi: 10.1016/j.neuroimage.2018.04.031
- Thompson, D. K., Omizzolo, C., Adamson, C., Lee, K. J., Stargatt, R., Egan, G. F., et al. (2014). Longitudinal growth and morphology of the hippocampus through childhood: impact of prematurity and implications for memory and learning. *Hum. Brain Mapp.* 35, 4129–4139. doi: 10.1002/hbm.22464
- Tideman, E. (2000). Longitudinal follow-up of children born preterm: cognitive development at age 19. *Early Hum. Dev.* 58, 81–90. doi: 10.1016/S0378-3782(00)00055-54
- Tulsky, D. S. (2003). *Clinical Interpretation of the WAIS-III and WMS-III*. Cambridge MA: Academic Press.
- Wechsler, D. (2003). *WISC IV, Wechsler Intelligence Scale for Children. Fourth Edition. Technical and Interpretive Manual*. San Antonio, TX: Harcourt Assessment.

- Weisglas-Kuperus, N., Hille, E. T. M., Duivenvoorden, H. J., Finken, M. J. J., Wit, J. M., Buuren, S., et al. (2009). Intelligence of very preterm or very low birthweight infants in young adulthood. *Arch. Dis. Child Fetal Neonatal. Ed.* 94, F196–F200. doi: 10.1136/adc.2007.135095
- Wheater, M., and Rennie, J. M. (2000). Perinatal infection is an important risk factor for cerebral palsy in very-low-birthweight infants. *Dev Med. Child Neurol.* 42, 364–367. doi: 10.1111/j.1469-8749.2000.tb00113.x
- World Health Organization (2018). *Preterm Birth*. Available at: <https://www.who.int/news-room/fact-sheets/detail/preterm-birth> (accessed August 2019).
- Wilson, B., Cockburn, J., and Baddeley, A. (1985). *The Rivermead Behavioural Memory Test*. Bury St. Edmunds: Thames Valley Test Company.
- Young, J. M., Vandewouw, M. M., Mossad, S. I., Morgan, B. R., Lee, W., Smith, M. L., et al. (2019). White matter microstructural differences identified using multi-shell diffusion imaging in six-year-old children born very preterm. *Neuroimage Clin.* 23:101855. doi: 10.1016/j.nicl.2019.101855
- Zhang, Y., Inder, T. E., Neil, J. J., Dierker, D. L., Alexopoulos, D., Anderson, P. J., et al. (2015). Cortical structural abnormalities in very preterm children at 7 years of age. *Neuroimage* 109, 469–479. doi: 10.1016/j.neuroimage.2015.01.005

**Conflict of Interest Statement:** The authors declare that the research was conducted in the absence of any commercial or financial relationships that could be construed as a potential conflict of interest.

Copyright © 2019 Córcoles-Parada, Giménez-Mateo, Serrano-del-Pueblo, López, Pérez-Hernández, Mansilla, Martínez, Onsurbe, San Roman, Ubero-Martinez, Clayden, Clark and Muñoz-López. This is an open-access article distributed under the terms of the Creative Commons Attribution License (CC BY). The use, distribution or reproduction in other forums is permitted, provided the original author(s) and the copyright owner(s) are credited and that the original publication in this journal is cited, in accordance with accepted academic practice. No use, distribution or reproduction is permitted which does not comply with these terms.