

REVIEW ARTICLE

eHealth tools for assessing psychomotor activity in schizophrenia: a systematic review

Rosa Molina,¹ Alejandro Porrás-Segovia,² Marta Ruiz,¹ Enrique Baca-García^{1,2,3,4,5,6,7,8} 

¹Departamento de Psiquiatria, Hospital Universitario Rey Juan Carlos, Móstoles, Spain. ²Departamento de Psiquiatria, Hospital Universitario Fundación Jiménez Díaz, Madrid, Spain. ³Departamento de Psiquiatria, Universidad Autónoma de Madrid, Madrid, Spain. ⁴Departamento de Psiquiatria, Hospital General de Villalba, Madrid, Spain. ⁵Departamento de Psiquiatria, Hospital Universitario Infanta Elena, Valdemoro, Spain. ⁶Centro de Investigación Biomédica en Red Salud Mental (CIBERSAM), Instituto de Salud Carlos III, Madrid, Spain. ⁷Département de Psychiatrie, Centre Hospitalier Universitaire De Nîmes, Nîmes, France. ⁸Universidad Católica del Maule, Talca, Chile.

Objective: Psychomotor abnormalities are relevant symptoms in the clinical presentation of schizophrenia, and assessing them could facilitate monitoring. New technologies can measure psychomotor activity objectively and continuously, but evidence on the topic is scarce. Our aim is to systematically review the existing evidence about eHealth tools for assessing psychomotor activity in patients diagnosed with schizophrenia.

Method: We performed a systematic search of the PubMed and Embase databases and identified 15 relevant articles on eHealth tools for assessing psychomotor activity in schizophrenia.

Results: eHealth devices accurately assessed psychomotor activity and were well accepted. Abnormalities in psychomotor activity helped differentiate between different subtypes of schizophrenia. Abnormal increases in psychomotor activity were correlated with acute presentations, while lower activity was associated with relapses, deterioration, and negative symptoms.

Conclusion: Actigraphy is still the preferred eHealth device in research settings, but mobile applications have great potential. Further studies are needed to explore the possibilities of psychomotor monitoring and mobile health applications for preventing relapses in schizophrenia. eHealth could be useful for monitoring psychomotor activity, which might help prevent relapses.

Keywords: Actigraphy; eHealth; mobile applications; psychomotor activity; schizophrenia

Introduction

Schizophrenia affects more than 21 million people around the world and is associated with high rates of disability and reduced life expectancy.¹ Aberrant motor function is a common feature of schizophrenia. Psychomotor abnormalities (e.g., catatonia, extrapyramidal symptoms, lower psychomotor activity, and motoric neurological soft signs) are associated with poor prognosis and can be an early indicator of decompensation.^{2,3} Thus, they could be exploited for secondary prevention, which is one of the most sought-after goals in schizophrenia management, since relapses have a great impact on disease progression.⁴

Motor symptoms can also be a side effect of antipsychotic medications. Although the introduction of second-generation antipsychotics has reduced the risks, they are still prevalent: drug-induced extrapyramidal symptoms reach 15% for dystonia, 16% for akathisia, and 29% for parkinsonism.⁵ Psychomotor activity can alert us to potentially serious side effects of antipsychotic medication. Patients may fail to identify the exact nature of their

discomfort, which could delay diagnosis of extrapyramidal side effects. Switching to a different antipsychotic or minimizing the side effects with co-adjuvant strategies could prevent treatment discontinuation, a major issue in schizophrenia patients.⁶ Reduced psychomotor activity could also indicate a deterioration in other aspects of physical health, such as an increased risk of metabolic syndrome.⁷

Nursing professionals play a major role in monitoring the mental and physical status of patients, assessing the side effects of medication and encouraging good treatment adherence. Reliable tools for measuring psychomotor activity can be very helpful for these purposes, especially if they allow continuous symptom monitoring. However, the availability of tools to objectively assess psychomotor-related variables is very limited. Assessment usually involves psychometric scales and clinical observations, whose subjectivity is susceptible to bias.

Psychomotor assessment in schizophrenia can be facilitated through the use of new technologies. Applying digital devices to healthcare settings, which is called electronic health or eHealth, is opening new prospects in

the management and prevention of mental disorders.^{8,9} The potential of eHealth has increased thanks to continuous improvements in sensor precision and the widespread availability of eHealth tools, such as smartphones, wearable devices, and virtual reality platforms.¹⁰

eHealth interventions show excellent rates of acceptability and usability. For instance, it is estimated that over 60% of patients who have suffered from a psychotic episode support the use of mobile applications for monitoring their condition, and the daily usage rate for those who have them is over 85%. The sensors of wearable technologies, smartphones and other devices can provide information on user mobility (location, frequency of movement and distance travelled) and psychomotor activity (movement and acceleration). By integrating this information with data from other sources, increasingly complex variables can be inferred. Moreover, through machine learning, mobile applications can infer the association between certain behavior patterns and clinical decompensation.¹¹

In the past few years, there has been an increasing interest in these technologies in mental health settings, but the continuous development of new technologies is advancing much faster than empirical research on them.¹² It is crucial to review the evidence about such tools to provide the best evidence-based knowledge for good use of this technology. This is the first review on this topic. Our aim is to systematically review the existing evidence about eHealth tools for assessing psychomotor activity in schizophrenia.

Methods

This review complied with the applicable Preferred Reporting Items for Systematic reviews and Meta-Analyses (PRISMA) guidelines.¹³

Inclusion/exclusion criteria

The inclusion criteria were: 1) articles published in peer-reviewed journals; 2) articles that included adults diagnosed with schizophrenia in their sample; 3) articles that explored any kind of eHealth tool (mobile apps, wearable devices, computer software, virtual reality devices, actigraphs, video games) to evaluate psychomotor variables. Proofs of concept, protocols for original studies, n=1 case studies, and articles that did not provide measurable outcomes were excluded.

Search strategy

We conducted a systematic literature search in the PubMed and Embase databases whose final search date was January 21st, 2020. There were no restrictions regarding publication date, although only publications in English or Spanish were selected for review. For the search strategy, we used combinations of three groups of terms: one group to refer to eHealth, another for psychomotor variables, and a third focusing on schizophrenia diagnosis.

The following search terms were used (in any field): ((ehealth OR mhealth OR technology OR actigraph OR phone OR app OR virtual reality OR video game OR

videogame OR wearables OR computer) AND (psychomotor OR movement OR motor OR mobility OR physical activity) AND (schizophrenia OR psychosis OR psychotic OR schizophrenic)). The references of included studies were also screened.

Study selection process

The publications were assessed independently by two researchers (APS and RM). Articles were selected according to their relevance and quality. We used critical appraisal checklists to assess study quality.¹⁴ Conflicts were resolved through a third author (EBG), who made the final decision. Agreement between reviewers, measured by intraclass correlation coefficient (ICC), was 0.80 (95% confidence interval [95%CI] 0.69-0.88).

Data extraction

Data were collected by two independent authors (APS and RM) using previously developed forms. Data on the following variables were collected: author, study design, year of study publication, device, psychometric tools, and main findings.

Results

Results of the bibliographical search

The initial search revealed 1,251 results. After content analysis, 15 articles were included in the review. Figure 1 shows the flow chart of the systematic search.

Study characteristics

The sample sizes ranged between 11¹⁵ and 148 participants.¹⁶ The main findings of the reviewed studies are shown in Table 1.¹⁵⁻²⁹ Eleven of the studies included only psychotic patients in the case group, while four used mixed psychiatric samples with different diagnoses – including schizophrenia. Most studies recruited stable patients with no recent psychopathological decompensations, while a few included patients who were at high risk or who had been admitted to acute inpatient psychiatric units.²³

Wearable devices

In 11 of the reviewed articles, movement was assessed through actigraphy. In most of them, the actigraph was integrated into a wearable device, typically worn on the wrist.

The Actiwatch[®], a wrist-worn actigraphy-equipped device developed by Cambridge Neurotechnology, was the most common device used in these studies. Walther et al. measured psychomotor activity over 24 hours in 55 patients using the Actiwatch, and then compared the results with the patients' Positive and Negative Syndrome Scale (PANSS) scores, finding that high scores in PANSS-assessed negative symptoms correlated with low levels of actigraphy-measured motor activity. In contrast, specific motor-related

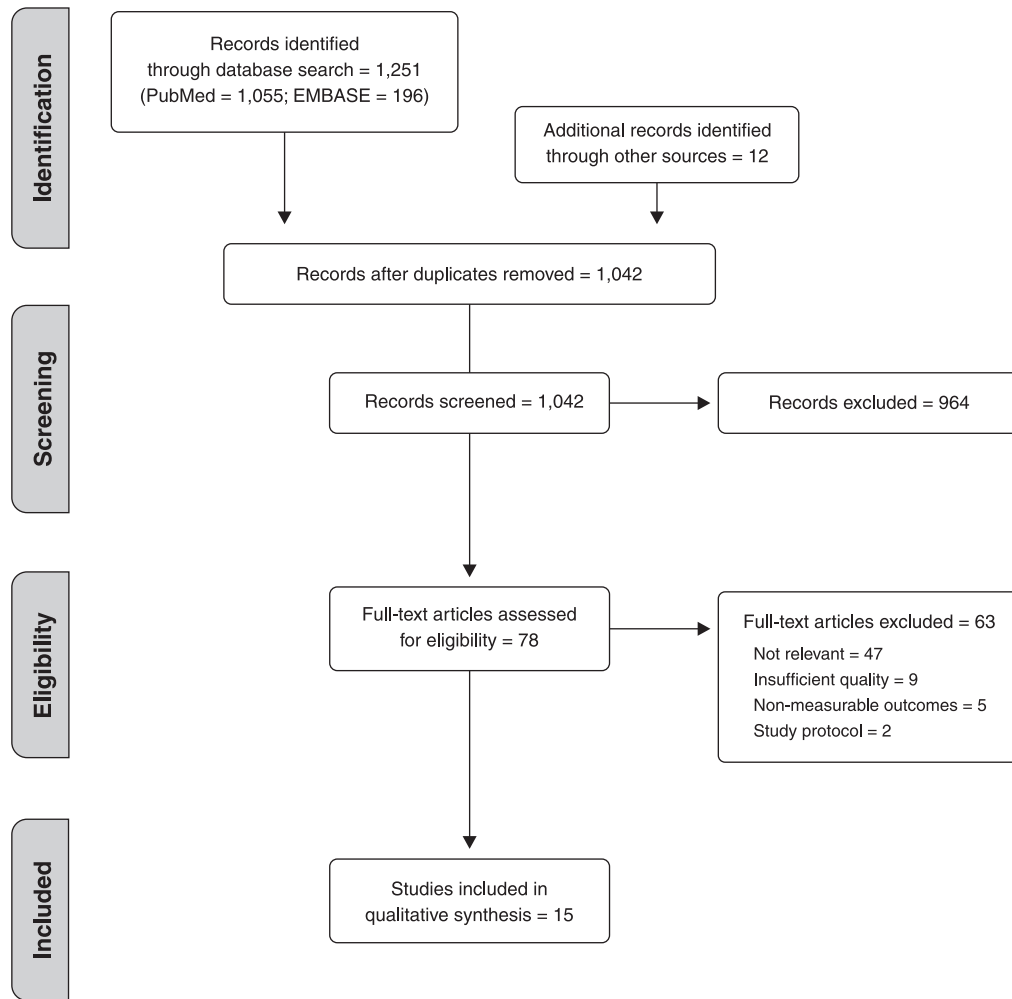


Figure 1 Flow chart of the bibliographic search.

items of the PANSS scale were not significantly associated with their corresponding actigraphic parameters.¹⁶ Also using the Actiwatch, Welther et al. found that differences in physical activity accurately discriminated between first psychotic episode and subsequent outbreaks in those diagnosed with schizophrenia, with lower activity indicating greater deterioration.

A different wearable device, the SenseWear Pro3 Armband was used to assess sedentary behavior in patients diagnosed with schizophrenia, and good correlation was found between this assessment tool and traditional tests, such as the 6-minute walk test, regarding the physical component of the Health-Related Quality of Life.²⁰

Other eHealth tools

Three of the reviewed studies used mobile apps, either alone or in combination with actigraphy. Barnett et al. followed 17 adults diagnosed with schizophrenia for 3 months, using passively collected smartphone data on mobility and social activity to predict relapses. They found that behavioral abnormalities were 71% higher at the moment of relapse than during periods of stability.¹⁸ Kluge et al. used a combination of Ecological Momentary

Assessment (EMA) and actigraphy to measure motor activity and explore its association with apathy. They found that objectively measured motor activity was a better correlate of apathy than daily activities subjectively assessed through EMA. They also found that alterations detected by actigraphy had different neurobiological correlates than those detected by EMA.²⁵

Two studies used video recording and analysis software to objectively assess psychomotor activity. Dean et al. chose this approach to characterize young adults at high risk of psychosis, finding that motor activity accurately differentiated them from age-matched healthy controls.²³ Dutschke et al. also used video recording with automatized analysis, finding differences in gesture performance between cases and controls.²⁴

Feasibility

Actigraphy and inertial movement sensors yielded generally good results in terms of user acceptance and engagement, with few drop-outs over the follow-up periods. In some studies, patients received some kind of monetary compensation for participating.²⁵ The most commonly reported causes for dropout were: failure to engage with

Table 1 Summary of the findings of the reviewed studies

Study	Sample size	Study design	Device	Psychometric tools	Main findings
Berle, 2010 ¹⁷	46 cases & 23 controls	Cohort	Wearable device (Actiwatch)	MADRS, BPRS	Reduced motor activity in cases compared to controls. Less complex motor activity was found in cases than controls.
Barnett, 2018 ¹⁸	17	Cohort	Smartphone app (Beiwe App)		71% increase in mobility changes at relapse.
Bracht, 2012 ¹⁹	106	Validation	Wearable device (Actiwatch)	BPS, GSM	Actigraphy-assessed motor activity was highly correlated with GSM scores and quantitative BPS scores, but not with qualitative BPS scores.
Bueno, 2018 ²⁰	82	Validation	Wearable device (SenseWear Pro3)	6-MWT, HRQoL	Digitally-measured BMI, CRF and vitality were associated with physical component scores of HRQoL.
Cella, 2017 ²¹	30 cases & 25 controls	Cross-sectional	mHealth device	PANSS	Cases showed lower levels of HR variability, movement and functioning. Illness severity and positive symptoms were associated with parasympathetic dysregulation.
Chapman, 2017 ²²	99	Cross-sectional	ActiGraph GT3X	MINI	There were significant differences in activity patterns between BD and schizophrenia cases.
Dean, 2018 ²³	54 cases & 62 controls	Case-control	Video analysis software	SIPS, SCID	Cases showed greater total body movement and speed than controls, but lower variation in body movement.
Dutschke, 2018 ²⁴	31 cases & 32 controls	Case-control	Videoanalysis software (MEA)	MINI, TULIA	Cases and controls differed significantly in quantitative gesture performance: cases required more movement and more time to complete the tasks.
Kluge, 2018 ²⁵	18	Cross-sectional	Tri-axial-accelometer + Pro-Diary	PANSS	Motor activity was negatively correlated with apathy. EMA measures of daily activity were not associated with apathy.
Mentzel, 2016 ¹⁵	6 cases & 5 controls	Case-control	Wearable device (accelerometer, gyroscope and magnetometer)		Seven tasks significantly discriminated cases from controls. The best combination for instrumental assessment of bradykinesia was gait + pronation/supination + leg agility and flexion + elbow extension.
Naslund, 2016 ²⁶	34	Intervention	Wearable device (Fitbit Zip)	6-MWT	Higher daily average of steps was associated with a greater weight loss, but not better physical condition.
Osipov, 2015 ²⁷	16 cases & 19 controls	Validation	Waist-worn wearable		Cross-validation accuracy was 95.3% for differentiating between cases and controls through motor activity and heart rate.
Walther, 2015 ¹⁶	148	Cross-sectional	Wearable device (Actiwatch)		First psychotic episodes were associated with higher actigraphic activity. Decreased motor activity was associated with n° of relapses.
Walther, 2009 ²⁸	55	Validation	Wearable device (Actiwatch)	PANSS	Negative symptoms were associated with low activity levels. PANSS scale psychomotor items imprecisely reflected actigraphy-measured motor activity.
Wichniak, 2011 ²⁹	73 cases & 36 controls	Case-control	Wearable device (Actiwatch)	AIS, ESS, PANSS, CDSS	Cases had lower 24-h and 10-h daytime activity, and longer time in bed than controls. Lower activity was associated with higher PANSS scores and negative symptoms.

6-MWT = 6-Minute Walk Test; AIS = Athens Insomnia Scale; BD = bipolar disorder; BMI = body mass index; BPRS = Brief Psychiatric Rating Scale; BPS = Bern Psychopathology Scale; CDSS = Calgary Depression Scale for Schizophrenia; CRF = cardiorespiratory fitness; ESS = Epworth Sleepiness Scale; EMA = Ecological Momentary Assessment; ESS = Epworth Sleepiness Scale; GSM = global severity of the motor behavior domain; HR = heart rate; HRQoL = Health-Related Quality of Life; MADRS = Montgomery-Asberg Depression Rating Scale; MEA = Motion Energy Analysis Program; MINI = Mini International Neuropsychiatric Interview; PANSS = Positive and Negative Syndrome Scale; SCID = Structured Clinical Interview for Axis-I DSM-IV Disorders; SIPS = Structured Interview for Prodromal Syndromes; TULIA = Test of Upper Limb Apraxia.

the device/application for several days in a row,^{20,25,26} losing the portable device,²⁶ and technical issues with the device/application.²⁰

Discussion

Summary of findings

We found few articles exploring new technologies for assessing psychomotor activity in schizophrenia. This is a neglected field of study that should receive further attention in future research.

Psychomotor abnormalities in schizophrenia

Psychomotor variables are highly correlated with relevant aspects of schizophrenia. Since psychomotor symptoms can help predict a first psychiatric episode and are predictors of high risk for psychosis, they might also be used as markers to predict changes in the clinical course of the disease. Early detection and treatment of the first psychotic episode and subsequent relapses greatly improves prognosis.

In our review, an abnormal increase in psychomotor activity was correlated with acute presentations, while lower activity was associated with deterioration. Abnormalities in psychomotor activity also helped differentiate between different subtypes of schizophrenia patients. These findings could be related to the different pathophysiological mechanisms underlying schizophrenia and may shed some light on the neurobiological correlates of the disorder.

The differences in motor activity between depression and schizophrenia patients found in one of the studies suggest that these motor symptoms are more than a non-specific consequence of severe mental illness. In research settings, these symptoms may yield more clinically-relevant data than other transdiagnostic symptoms, such as sleep. Improved measures and the availability of more tools for objective mobility assessment, as well as the possibility of continuous monitoring, make psychomotor activity a valuable source of information that is underused in research.

Barriers to using eHealth

Despite good acceptability rates, there are still several barriers to using eHealth among psychiatric patients. One is that eHealth has not been integrated into public health systems, which can raise suspicions about its reliability and effectiveness and limit access to interventions.³⁰ Although a few health systems, such as the UK's National Health System, are beginning to integrate eHealth as a therapeutic tool in health care coverage, this is the exception rather than the rule.³¹ Privacy concerns have also been associated with patient reluctance to use eHealth.³² In agreement with previous reviews, we found that eHealth interventions are generally well accepted by individuals diagnosed with schizophrenia.³³ Most apps have had good rates of engagement, with few dropouts during follow-up. However, one potential bias is that the

samples predominantly consisted of stable patients, since they are more likely to participate. Another potential bias involves the use of incentives, i.e. monetary or other rewards for participating in studies and engaging with the devices. Since patients will not be rewarded for using the device in real world settings, the application of these findings in clinical practice could be limited.

Implications for clinical practice

eHealth tools could be especially apt for detecting relapses through continuous monitoring of psychomotor-related symptoms. Mobile phone ownership among people with psychosis is estimated to be between 66 and 81% and is rapidly increasing.^{34,35} The increasing reliability of the devices' sensors further expands their potential. Movement could be a feasible and reliable digital biomarker of decompensation and could be used in relapse prevention. This also represents a step towards precision medicine.⁸ However, most of the reviewed studies recommended actigraphy for objective measurement of movement. More studies with larger sample sizes are required to confirm this hypothesis.

The role of nursing staff in the implementation of eHealth tools

Nursing professionals can be crucial in overcoming these barriers and facilitating eHealth use in psychiatric patients.³⁶ Since psychiatric patients tend to create strong bonds with nursing professionals, whom they usually perceive as less threatening, they may trust their recommendations.³⁶ Another way to spread eHealth in psychiatric settings is by encouraging patients and their families to participate in designing and implementing usage strategies.³⁷

Limitations

Our findings must be considered in light of some limitations. Firstly, due to the composition of our research team, the search had to be language-restricted to Spanish or English. Secondly, the variety of terms for new technologies, which are becoming more numerous and varied, may have led us to overlook some tools that would fit within the eHealth umbrella. Finally, the exponential growth in available evidence will render any reviews in this field quickly outdated.

Conclusions

Although eHealth-based mobility assessment is still at an early stage of development, eHealth tools were found to be generally accurate assessment methods in the reviewed studies. One factor that can influence precision is the placement of the wearable device. Devices are usually attached to the non-dominant wrist, since measures from the dominant wrist might reflect low-energy demanding manual tasks rather than whole body movement. Placing devices on different parts of the body (e.g. the chest, hip, or waist) risks less sensitivity to activities performed while

sitting. Technological advancements and optimizing these devices for use in clinical practice can improve precision in the next few years.

Acknowledgements

This study received grant support from the Instituto de Salud Carlos III (Grant/Award Number: ISCIII CM19/00026).

Disclosure

The authors report no conflicts of interest.

References

- Chong HY, Teoh SL, Wu DB, Kotirum S, Chiou CF, Chaiyakunapruk N. Global economic burden of schizophrenia: a systematic review. *Neuropsychiatr Dis Treat*. 2016;12:357-73.
- Morrens M, Docx L, Walther S. Beyond boundaries: in search of an integrative view on motor symptoms in schizophrenia. *Front Psychiatry*. 2014;5:145.
- Peralta V, Cuesta MJ. Motor abnormalities: from neurodevelopmental to neurodegenerative through “functional” (Neuro) psychiatric disorders. *Schizophr Bull*. 2017;43:956-71.
- Tibbo P, Malla A, Manchanda R, Williams R, Joober R. Relapse risk assessment in early phase psychosis: the search for a reliable and valid tool. *Can J Psychiatry*. 2014;59:655-8.
- Martino D, Karnik V, Osland S, Barnes TR, Pringsheim TM. Movement disorders associated with antipsychotic medication in people with schizophrenia: an overview of Cochrane reviews and meta-analysis. *Can J Psychiatry*. 2018;63:730-9.
- Schoemaker JH, Vingerhoets AJ, Emsley Ra. Factors associated with poor satisfaction with treatment and trial discontinuation in chronic schizophrenia. *CNS Spectr*. 2018;24:380-9.
- Amiel JM, Mangurian CV, Ganguli R, Newcomer JW. Addressing cardiometabolic risk during treatment with antipsychotic medications. *Curr Opin Psychiatry*. 2008;21:613-8.
- Berrouiguet S, Perez-Rodríguez MM, Larsen M, Baca-García E, Courtet P, Oquendo M. From eHealth to iHealth: transition to participatory and personalized medicine in mental health. *J Med Internet Res*. 2018;20:e2.
- Tal A, Torous J. The digital mental health revolution: opportunities and risks. *Psychiatr Rehabil J*. 2017;40:263-5.
- Ware P, Bartlett SJ, Paré G, Symeonidis I, Tannenbaum C, Bartlett G, et al. Using eHealth technologies: interests, preferences, and concerns of older adults. *Interact J Med Res*. 2017;6:e3.
- Berrouiguet S, Ramírez D, Barrigón M, Moreno-Muñoz P, Carmona Camacho R, Baca-García E, et al. Combining continuous smartphone native sensors data capture and unsupervised data mining techniques for behavioral changes detection: a case series of the evidence-based behavior (eB2) study. *JMIR Mhealth Uhealth*. 2018;6:e197.
- Kumar S, Nilsen WJ, Abernethy A, Atienza A, Patrick K, Pavel M, et al. Mobile health technology evaluation: the mHealth evidence workshop. *Am J Prev Med*. 2013;45:228-36.
- Moher D, Liberati A, Tetzlaff J, Altman DG; The PRISMA Group. Preferred reporting items for systematic reviews and meta-analyses: the PRISMA Statement. *PLoS Med*. 2009;6:e1000097.
- Cardiff University. Critical appraisal checklists [Internet]. [cited 2020 May 6]. <https://www.cardiff.ac.uk/specialist-unit-for-review-evidence/resources/critical-appraisal-checklists>
- Mentzel TQ, Mentzel CL, Mentzel SV, Lieverse R, Daanen HA, van Harten PN. Instrumental assessment of bradykinesia: a comparison between motor tasks. *IEEE J Biomed Health Inform*. 2016;20:521-6.
- Walther S, Stegmayer K, Horn H, Razavi N, Müller TJ, Strik W. Physical activity in schizophrenia is higher in the first episode than in subsequent ones. *Front Psychiatry*. 2015;5:191.
- Berle JO, Hauge ER, Oedegaard KJ, Holsten F, Fasmer OB. Actigraphic registration of motor activity reveals a more structured behavioural pattern in schizophrenia than in major depression. *BMC Res Notes*. 2010;3:149.
- Barnett I, Torous J, Staples P, Sandoval L, Keshavan M, Onnela JP. Relapse prediction in schizophrenia through digital phenotyping: a pilot study. *Neuropsychopharmacology*. 2018;43:1660-6.
- Bracht T, Heidemeyer K, Koschorke P, Horn H, Razavi N, Wopfner A, et al. Comparison of objectively measured motor behavior with ratings of the motor behavior domain of the Bern psychopathology scale (BPS) in schizophrenia. *Psychiatry Res*. 2012;198:224-9.
- Bueno-Antequera J, Oviedo-Caro MÁ, Munguía-Izquierdo D. Relationship between objectively measured sedentary behavior and health outcomes in schizophrenia patients: the PsychiActive project. *Schizophr Res*. 2018;197:87-92.
- Cella M, Okruszek L, Lawrence M, Zarlenga V, He Z, Wykes T. Using wearable technology to detect the autonomic signature of illness severity in schizophrenia. *Schizophr Res*. 2018;195:537-42.
- Chapman JJ, Roberts JA, Nguyen VT, Breakspear M. Quantification of free-living activity patterns using accelerometry in adults with mental illness. *Sci Rep*. 2017;7:43174.
- Dean DJ, Samson AT, Newberry R, Mittal VA. Motion energy analysis reveals altered body movement in youth at risk for psychosis. *Schizophr Res*. 2018;200:35-41.
- Dutschke LL, Stegmayer K, Ramseyer F, Bohlhalter S, Vanbellinghen T, Strik W, et al. Gesture impairments in schizophrenia are linked to increased movement and prolonged motor planning and execution. *Schizophr Res*. 2018;200:42-9.
- Kluge A, Kirschner M, Hager OM, Bischof M, Habermeyer B, Seifritz E, et al. Combining actigraphy, ecological momentary assessment and neuroimaging to study apathy in patients with schizophrenia. *Schizophr Res*. 2018;195:176-82.
- Naslund JA, Aschbrenner KA, Scherer EA, McHugo GJ, Marsch LA, Bartels SJ. Wearable devices and mobile technologies for supporting behavioral weight loss among people with serious mental illness. *Psychiatry Res*. 2016;244:139-44.
- Osipov M, Behzadi Y, Kane JM, Petrides G, Clifford GD. Objective identification and analysis of physiological and behavioral signs of schizophrenia. *J Ment Health*. 2015;24:276-82.
- Walther S, Koschorke P, Horn H, Strik W. Objectively measured motor activity in schizophrenia challenges the validity of expert ratings. *Psychiatry Res*. 2009;169:187-90.
- Wichniak A, Skowerska A, Chojnacka-Wójtowicz J, Tafliński T, Wierzbicka A, Jernajczyk W, et al. Actigraphic monitoring of activity and rest in schizophrenic patients treated with olanzapine or risperidone. *J Psychiatr Res*. 2011;45:1381-6.
- Erbes CR, Stinson R, Kuhn E, Polusny M, Urban J, Hoffman J, et al. Access, utilization, and interest in mHealth applications among veterans receiving outpatient care for PTSD. *Mil Med*. 2014;179:1218-22.
- Bower DJ, Barry N, Reid M, Norrie J. Designing and implementing e-Health applications in the UK's National Health Service. *J Health Commun*. 2005;10:733-50.
- Lipschitz J, Miller CJ, Hogan TP, Burdick KE, Lippin-Foster R, Simon SR, et al. Adoption of mobile apps for depression and anxiety: cross-sectional survey study on patient interest and barriers to engagement. *JMIR Ment Health*. 2019;6:e11334.
- Naslund JA, Marsch LA, McHugo GJ, Bartels SJ. Emerging mHealth and eHealth interventions for serious mental illness: a review of the literature. *J Ment Health*. 2015;24:320-31.
- Firth J, Cotter J, Torous J, Bucci S, Firth JA, Yung AR. Mobile phone ownership and endorsement of “mHealth” among people with psychosis: a meta-Analysis of cross-sectional studies. *Schizophr Bull*. 2016;42:448-55.
- Firth J, Torous J. Smartphone apps for schizophrenia: a systematic review. *JMIR Mhealth Uhealth*. 2015;3:e102.
- Koivunen M, Saranto K. Nursing professionals' experiences of the facilitators and barriers to the use of telehealth applications: a systematic review of qualitative studies. *Scand J Caring Sci*. 2018;32:24-44.
- Mosconi P, Radrezza S, Lettieri E, Santoro E. Use of health apps and wearable devices: survey among Italian associations for patient advocacy. *JMIR Mhealth Uhealth*. 2019;7:e10242.