

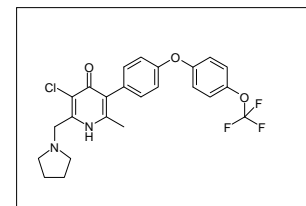
LCMS ANALYSIS

Concentration: 0.2mg/mL

Column: ACE C18 3µm 30.2.0mm

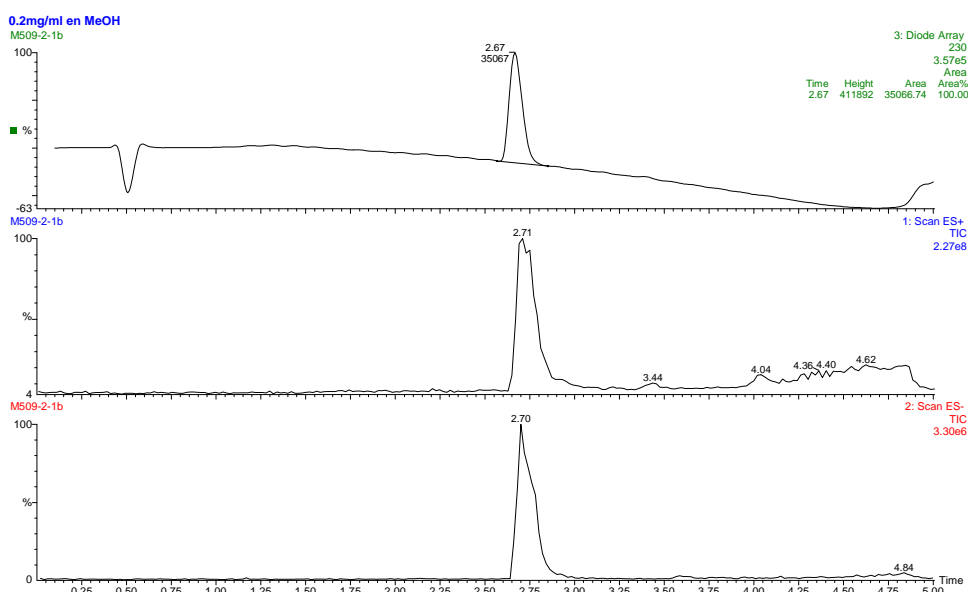
Method: Formic Acid 0.1%/ ACN 0-0.2 90:10 ; 0.2-3.5 de 90:10 a 10:90

3.5-4 10:90, 4.01-5 90:10 Flow: 1mL/min Viny 5uL



Retention Time(min)	Molecular Formula	Monoisotopic Mass	[M+H] ⁺	[M-H] ⁻	Purity (230nm)
2.67	C ₂₄ H ₂₂ ClF ₃ N ₂ O ₃	478	479	477	>95

Chromatograms



Spectra

