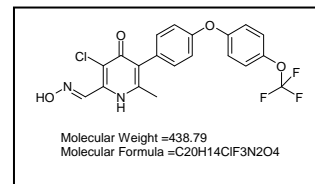


LCMS ANALYSIS



Concentration: 0.2mg/mL

Column: Ace C18 3u 30x4.6mm

Method: formic acid 0.1% pH2.4 / AcN 0-0.2 90:10 ; 0.2-3.5 de 90:10 a 10:90
3.5-4 10:90, 4.01-5 90:10 Flow: 1.0mL/min Viny 5uL T^a 30°C

Retention Time(min)	Molecular Formula	Monoisotopic Mass	[M+H] ⁺	[M-H] ⁻	Purity (254nm)
3.19	C ₂₀ H ₁₄ Cl F ₃ N ₂ O ₄	438	439		>95

Chromatograms & Spectra

