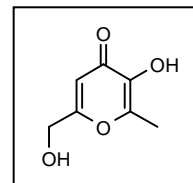


LCMS ANALYSIS

Concentration: 0.2mg/mL

Column: ACE 3u 30x4.6. C18

Method: formico 0.1% / ACN 0-0.2 90:10 ; 0.2-3.5 de 90:10 a 10:90
3.5-4 10:90, 4.01-5 90:10 Flow: 1mL/min Viny 5uL T^a 30



Retention Time(min)	Molecular Formula	Monoisotopic Mass	[M+H] ⁺	[M-H] ⁻	(274nm)
0.77	C ₇ H ₈ O ₄	156	157		>95

Chromatograms

