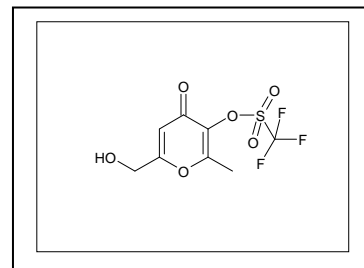


LCMS ANALYSIS



Concentration: 0.2mg/mL

Column: ACE 3u 30x4.6. C18

Method: formico 0.1% pH2.4 / ACN 0-0.2 90:10 ; 0.2-3.5 de 90:10 a 10:90
3.5-4 10:90, 4.01-5 90:10 Flow: 1.0mL/min Viny 5uL T^a 30

Retention Time(min)	Molecular Formula	Monoisotopic Mass	[M+H] ⁺	[M-H] ⁻	(254nm)
2.49	C8 H7 F3 O6 S	288	289		>95

Chromatograms & Spectrums

