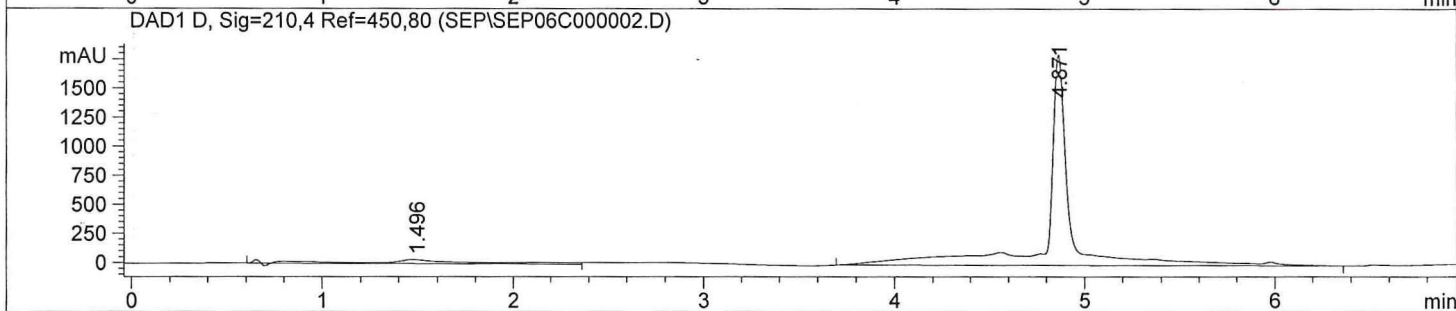
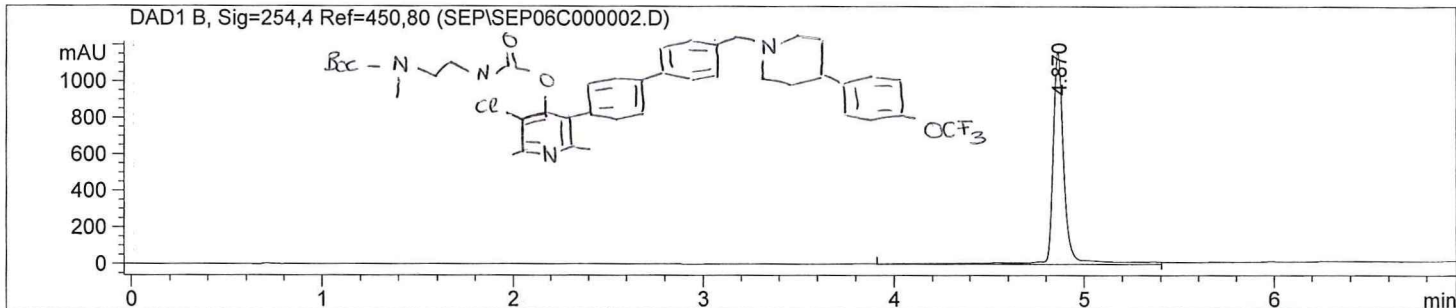


Sample Name: M570/97/F5

```

=====
Acq. Operator   : LABIII                               Seq. Line :    2
Acq. Instrument : Instrument 1                         Location  : Vial 42
Injection Date  : 9/6/2007 5:29:21 PM                 Inj       :    1
                                                    Inj Volume: 3 µl

Sequence File   : C:\CHEM32\1\SEQUENCE\SEP06C.S
Method          : C:\CHEM32\1\METHODS\C1A10_00.M
Last changed    : 4/10/2007 3:32:27 PM by LABIII
Method Info     : GRADIENTE DESDE 10% ACN HASTA 100% ACN, 0.1% TFA. COLUMNA x-terra (posici
                  50mmX4.6mm (CORTA)
    
```



Area Percent Report

```

Sorted By      : Signal
Multiplier     : 1.0000
Dilution       : 1.0000
Use Multiplier & Dilution Factor with ISTDs
    
```

Signal 1: DAD1 B, Sig=254,4 Ref=450,80

Peak #	RetTime [min]	Type	Width [min]	Area [mAU*s]	Height [mAU]	Area %
1	4.870	BB	0.1255	4966.65918	941.73175	100.0000

Totals : 4966.65918 941.73175

Signal 2: DAD1 D, Sig=210,4 Ref=450,80

Peak #	RetTime [min]	Type	Width [min]	Area [mAU*s]	Height [mAU]	Area %
1	1.496	BB	0.6322	1499.18542	31.67703	9.0551
2	4.871	BV	0.1762	1.50571e4	1565.29431	90.9449

Totals : 1.65563e4 1596.97135

*** End of Report ***